

**Northern Virginia Community College
Loudoun Campus
Waddell Theater**

Table of Contents

- 1. General Information and Fee Structure**
- 2. Directions**
- 3. Stage Description**
- 4. Lighting Equipment**
- 5. Sound Equipment**
- 6. Music Equipment**
- 7. Gallery and Reception Area**
- 8. Miscellaneous**

1. General Information and Fee Structure

General Dimensions

Stage: width 29' x 23' depth including apron
(see Section 3, "Stage Description")

Seating Capacity

230 with 2 wheelchairs spaces

Rental Contacts

Contact the Office of Continuing Education (703) 450-2551

Basic Rental Costs and Definition - \$150 per hour/min. of 3 hours

Use of Stage and Seating Area

Use of Dressing Rooms and Wing Space

Stage Supervisor (see duties under Crew Definitions)

Access to Control Booth (see "Crew Requirements" below)

General Area Lighting (see Section 4, "Lighting equipment")

Sound system for CD and Cassette Tape playback

Headset and stage monitor system

Podium with microphone

Hearing Impaired System

Orchestra Chairs

Rental Options and Costs

Computer, LCD Projector (in booth) and Projection Screen (onstage 6'-6" upstage of proscenium) - \$75.00 per day

Microphones and stands (see Section 5, "Sound Equipment") –

 Wired: \$15.00 per microphone per day

 Wireless: \$60.00 per microphone per day

Video Camera & VHS Recorder - \$75.00 per day

Use of Scene Shop and Access to Tools – To be negotiated on a per event request

Modify Standard Light Plot – To be negotiated on a per event request

High Lift - \$75.00 per day

Grand piano (untuned) - \$100.00 per event (Event requestors are responsible for any costs incurred in tuning the piano. If tuning is desired, event requestors must use NVCC recommendation for tuner.)

Orchestra shell - \$40.00 per section per day

Risers - \$10.00 per section per day

Marquee sign advertisement - \$100.00 per week

Crew Definitions and Costs:

Stage Supervisor – included in basic rental definition

The Stage Supervisor will be the technical liaison between NVCC and the incoming group. The Stage Supervisor will oversee load-in, rehearsal, and performance as part of the basic rental package.

Stage Technicians - \$65.00 per hour/min. of 3 hours (as of 9/1/02)

The only people authorized to operate the equipment will be AV/IT staff, professional CE staff, and individuals who have gone through appropriate training. Stage Technicians may operate NVCC lighting, sound, computer, or video equipment.

House Manager - \$35.00 per hour/min. of 3 hours

The House Manager will be the individual in charge of House Management during production. The necessity of a House Manager will be determined on an individual basis depending on the complexity of the production.

Load-in and running crew - \$25.00 per hour/min. 3 hours

The incoming event may provide some (or all) of the load-in and running crew. The exact number will be negotiated on an individual basis depending on the complexity of the technical set-up.

Parking and Campus Police:

Campus Police - \$50.00 per hour/per officer for an evening performance, for a minimum of 3 hours. All other times will be negotiated on a case-by-case basis.

Parking – Costs will be negotiated on a case-by-case basis.

Prices are subject to change without notice.

2. Directions to the NVCC Loudoun Campus

From the West (Leesburg):

Take Route 7 East. You will pass the Dulles Town Center Mall on the right. You will go under a bridge (Cascades Parkway). The Loudoun Campus is located on the left at the next traffic light across from the Potomac Run Shopping Center.

From the East (Tysons Corner):

Take Route 7 West. The Loudoun Campus is approximately 10 miles west of Tysons Corner. Follow Route 7 west past Route 637 (Sugarland Run). The Loudoun Campus is located on the right at the next traffic light across from the Potomac Run Shopping Center.

From the Southeast (Annandale):

Take I-495 North. From I-495 take exit 12 onto Route 267 West (Toll Road). From the Toll Road take exit 16 onto Route 7 West. Follow Route 7 West past Route 637 (Sugarland Run). The Loudoun Campus is located on the right at the next traffic light across from the Potomac Run Shopping Center.

From the Southwest (Manassas):

Take I-66 East to Route 28 North. Follow Route 28 North until the end. Exit Route 28 onto Route 7 East. You will pass the Dulles Town Center Mall on the right. You will go under a bridge (Cascades Parkway). The Loudoun Campus is located on the left at the next traffic light across from the Potomac Run Shopping Center.

From the North (Rockville, MD):

Take I-495 South, Capital Beltway, Outer Loop. From I-495 take exit 16 onto Route 267 West, the Dulles Toll Road. From the toll road take exit 16 onto Route 7 West. Follow Route 7 West past Route 637 (Sugarland Run). The Loudoun Campus is located on the right at the next traffic light across from the Potomac Run Shopping Center.

3. Stage Description

Note: Stage house has a trapezoidal footprint

Dimensions:

Proscenium height: **15'-11 ¾"** width: **25'- 4 ¾"**
Maximum Useable Stage Space behind proscenium: **30' x 13'-6"**
Wing space SR: 11'-6" to Scene Shop double doors
 SL: 11'-0" at 8' US Proscenium
Apron: 29'-1 ½" wide by 3'-5" deep plus steps at either end

Stage Floor:

Note: No nails, screws, or drilled holes are allowed.
Masonite painted black, screwed to sub-floor
Apron has white oak trim

Dance Floor:

There is no dance floor available at NVCC-Loudoun

See "Ground Plan" drawing and "Section" drawing for additional details

Note: There is NO crossover from Dressing rooms located SL without leaving the theater area.

Rigging

There is no moving rigging installed in the theater.

Masking/Draperies

Note: All drapes are installed on traveler track and may not be removed.

Main Drape:

Burgundy color
Permanent Valence 0'-2" US of Proscenium
Center-split curtain with rope on SL 0'-9" US of Proscenium

Black Masking

2 Permanent Valance/Border 5'-0" and 10'-6" US of Proscenium
#1 Legs 5'-8" US of Proscenium
#2 Legs and Traveler 11'-2" US of Proscenium

Back Drops

Black Sharktooth Scrim 11'-8" US of Proscenium
Curved white cyclorama 13'-6" to 19'-0" US of Proscenium

Lifts and Ladders

1 20' fiberglass step ladder
1 40' extension ladder
1 High lift possible use with advanced arrangement

Dressing Rooms

There are two chorus style dressing rooms with sink, toilet, and dressing mirrors located on the SL side of the theater with access to SL. There is NO crossover to SR without leaving the theater area.

4. Lighting Equipment

Repertory Light Plot

A flexible light plot is maintained in the theater. Please contact the Office of Continuing Education for details.

No change to the light plot may be made without advanced arrangement.

Dimmers

96 ETC 1.2 K

Circuits

84 distributed throughout theater (see Lighting Ground Plan)

Control Board

ETC Expression

with computer memory, submasters, and individual manual faders

Instrument inventory

| # | Type | lamp | gel frame |
|----|--------------------------|----------|--------------|
| 24 | ETC 426j | 575w HPL | 6.25 x 6.25 |
| 10 | ETC 436j | 575wHPL | 6.25 x 6.25 |
| 10 | ETC 450j | 575wHPL | 6.25 x 6.25 |
| 20 | Altman 6" fresnel (65Q) | BTN | 7.5 x7.5 |
| 3 | Altman Zip Strips (ZS-3) | | 4.75 x 4.375 |

Cable

Note: All cable is 12 gauge 3 conductor SO jacket with grounded stage pin connectors.

| | |
|----|-------------|
| 4 | 50' |
| 4 | 25' |
| 15 | 10' |
| 10 | 5' |
| 25 | 3' two-fers |

Color Media

Note: There is little color media in stock. Please call to inquire or plan to bring specific colors you will want.

Follow Spots

There are NO follow spots available at the theater. There is no provision to install follow spots in the house. The normal follow spot position is on the catwalk, which will require a block and fall or that the follow spot comes in easily managed pieces.

5. Sound Equipment

Microphones

| | |
|-------------------------------|---------------------------|
| Samson Wireless receiver UR6D | |
| 2 | Lavaliere type Samson UT6 |
| 1 | Handheld Samson CCRUH6X |
| Condenser | |
| 2 | Sony ECM 530/1 desk top |
| 2 | Audio-Technica ATM 33A |
| Dymanic | |
| 2 | Audio-Technica ATM 27HE |

House Speaker System

| | |
|---|---|
| | Permanently mounted Center Cluster plus House Left and Right speakers |
| 4 | Portable Peavy Stadium 11 B/PR 1003 (2 allocated to booth monitors) |

Mixing Console

| | |
|--|---|
| | Note: Permanently mounted in booth with no openable windows |
| | Studiomaster Trilogy 326 |
| | 24 input to 4 output masters |
| | 6 assignable auxiliary submasters |

Signal Processing

| | |
|-------------------------------------|--|
| Micro Audio EQ POD 1.0CQ | 28 Band programmable equalizer |
| Eastern Acoustic Works MX300i | 2 channel close coupled electronic processor |
| Sabine Adaptive Audio FBX 1020 Plus | Feed back exterminator |

Amplifiers

| | |
|---|--------------------------------------|
| 7 | Peavey Architectural Acoustics IA400 |
| 1 | Crown D-75A for booth monitor |

Patch Systems

| | |
|--|---|
| | Speaker assignment between amplifiers and house speaker outlets |
| | Microphone and rack-mounted equipment |

Playback

| | |
|-----------------|---------------------------|
| Tascam 122MKIII | single transport cassette |
| Pioneer PD-F507 | 25 CD magazine |

Video Amplifier

| | |
|--|--|
| | VideoTek VDA-16 connected to video outlets through house and dressing rooms |
| | Note: The theater has no video cameras or recorders to support this amplifier. |

Production Communication (headset and paging)

Headset

Audiocom 2 channel Base station in booth rack

Wall mounted talk stations in Scene Shop and Dressing Rooms

6 Belt packs

6 Double muff headsets

Connection plates throughout the theater (see Electrical Ground Plan)

Paging Amplifier

Peavy MMA 875T

Audience Services

Personal Hearing Assistance

30 Williams Sound Corporation Model R7 Personal PA

6. Music Equipment

Acoustical Orchestra Shell

5 Wanger

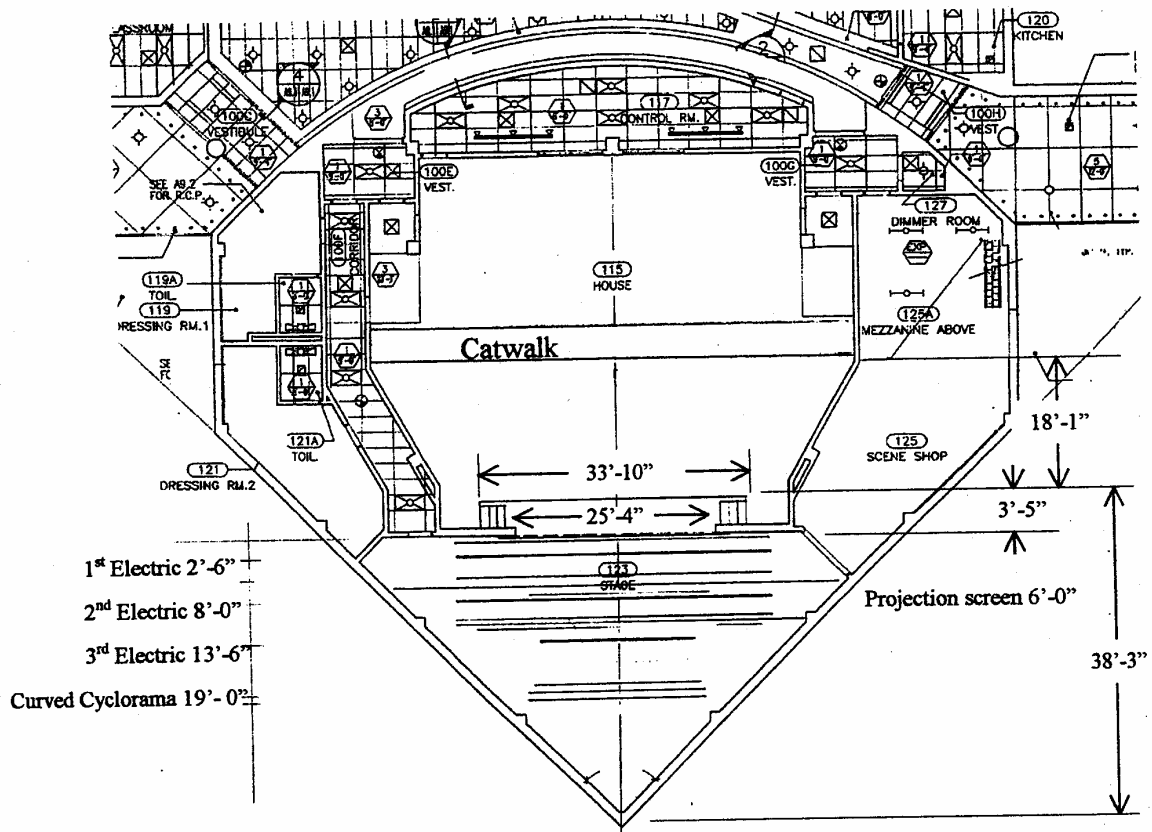
Choral Risers

Orchestra Chairs

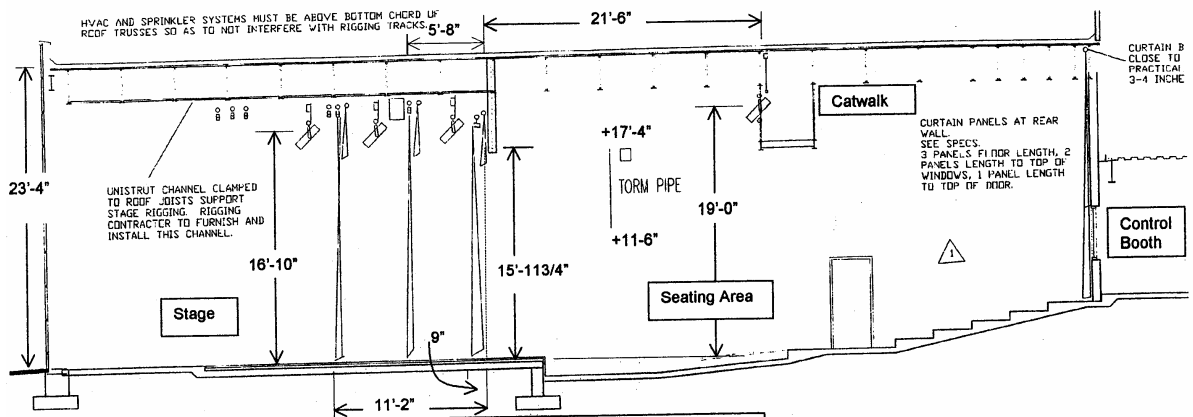
20 black

Grand Piano – UNTUNED

Note: Tuning must be arranged through college approved tuners.
Presenter must pay tuning costs.



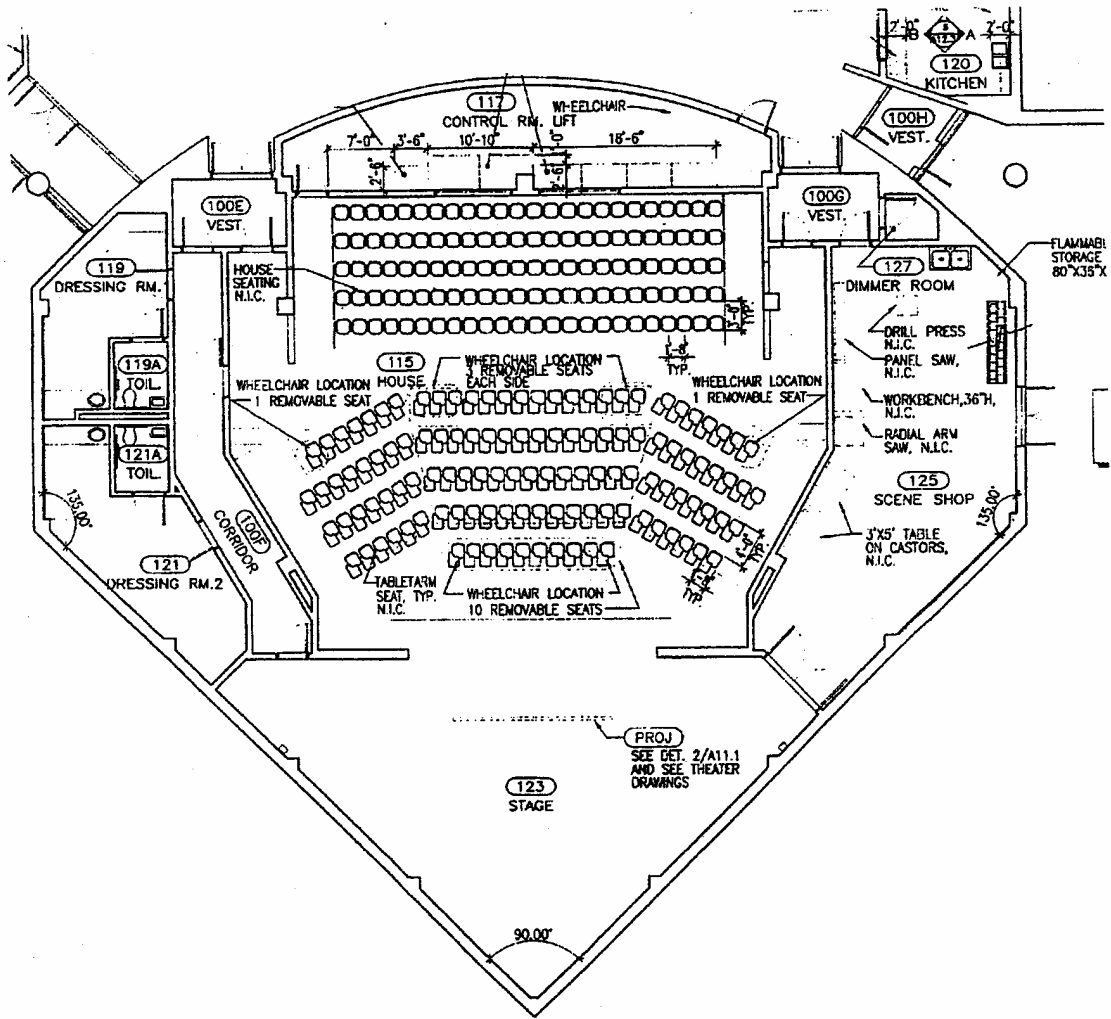
**Waddell, Theater, NVCC-Loudoun
Ground Plan**



**Waddell Theater, NVCC-Loudoun
Rigging Section through Center Line**

- Notes:
- No Scale
 - This Center Line section makes the stage look deceptively deep (see ground plan).
 - Repertory plot light line at 11'-6" upstage of plaster line.
 - Maximum curved cyc depth 19'-0"

Not on desk



2 FIRST FLOOR FURNITURE AND EQUIPMENT PLAN

**Waddell, Theater, NVCC-Loudoun
Seating Chart**

7. Gallery and Reception Area

Gallery

\$20.00 per hour – On-going exhibitions to be negotiated

Reception Area

\$30.00 per hour – includes use of three tables (extra tables to be negotiated), serving and prep area included. Client is responsible for clean-up.

8. Miscellaneous

Computer and Projector in Booth

Projector Proxima Pro AV 9350

Dell

Wireless gyro mouse

Video Playback

VHS

DVD

Use of Scene Shop and tools

These are only available for repair or light construction by advanced arrangement.

Fire Regulations

Open flame is not permitted onstage or anywhere in the theater. This includes lighting matches, cigarettes, oil lamps, or any other devices using open flames.