



AS in HEALTH  
SCIENCES and *MORE!*



Dr. Megan Cook, Dean of  
Health Sciences

# Objectives

---

- Introduction
- Why Are We Here?
- The Web Is Our Friend
- What is Our Next Step
- Health Sciences Programs
- Nursing Program
- Pathways



# Our Goals

---

To integrate best practices in NOVA Health Sciences and Nursing program education by promoting student success while preparing students for the Health Professions.

- To provide safe, evidence-based, patient-centered care that reflects ethical judgement and inter-professional collaboration between the college and healthcare facilities in the communities via lecture, labs and clinical instruction.
  - Graduation/Completion
  - Licensure/Certification Ready
  - Entry to Workforce
  - Transfer to a 4-year institution

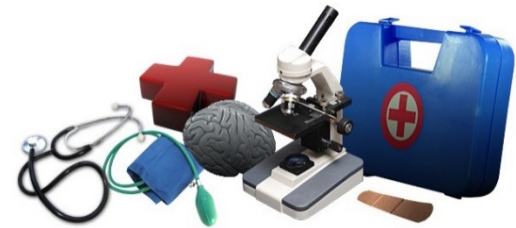


# NOVA Nursing & Health Sciences Programs

## 10 Associate of Applied Science Degree Programs

---

- Diagnostic Medical Sonography (RDMS)
- Dental Hygiene (RDH)
- Emergency Medical Services-Paramedic (EMT-P)
- Health Information Management (RHIT)
- Medical Laboratory Technology (MLT)
- Nursing (NUR/NSG)
- Occupational Therapy Assistant (OTA)
- Physical Therapist Assistant (PTA)
- Radiography-Diagnostic Imaging (RT-R)
- Respiratory Therapy (CRT) and (RRT)



**Radiation Oncology AAS – Virginia Western Community College**

<https://www.nvcc.edu/medical/apply/index.html>

# Health Sciences Certificates

## 4 Certificate Programs

---

Clinical Data Coding (CDC)

Dental Assisting (DNA)

Medical Laboratory Assistant (MLA)

Phlebotomy (PBT)

\* **All Financial Aid Approved**

## Website

- <https://www.nvcc.edu/medical/apply/index.html>

# *New* Program to HIGHLIGHT

---

- Health Science, AS degree
  - Associate of Science (A.S.) Degree
  - Designed for students to continue along two paths:
    - To apply to a competitive program at NOVA Medical Education Campus (MEC)
    - To prepare for entry to a variety of health sciences baccalaureate programs.



# HEALTH SCIENCES A.S.

---

## Leads to TWO pathways:

- **PATH 1:** Apply to one of the *MEC programs* and complete an A.A.S. degree or certificate
- **PATH 2:** Plan for transfer to the following *4-year university programs:*
  - A. George Mason University (GMU), BS in Health Administration
  - B. GMU, BS in Community Health
  - C. Marymount University, BS in Health Sciences
  - D. Old Dominion University, BS in Medical Laboratory Science



# PATH I: To the MEC Dental Hygiene (DNH)

## 2023 Program Requirements

**Ms. Betsy DiSilvio (Program Director)**

---

SDV 101 (“C”) or better

ENG 111 (“C”) or better

BIO 141, BIO 142 & BIO 150 (“B”) or better  
and completed within the past 10 years

Minimum cumulative GPA: 2.5

Competitive Admissions Process

General Education Courses

- **PSY 200 and CST 229**

Dental Assisting Experience

Formal Training (chair side)

Certification (Dental Assisting National Board)

TEAS Exam 50% or higher in each Science, Math,  
English, and Reading

**\$49.34/hr, \$102,620 annual**

O\*NET Online

<https://www.onetonline.org/link/summary/29-2021.00>



**NOVA – 32 students**

**Application period February 1st– February 15**

<https://www.nvcc.edu/medical/divisions/allied/dental-hygiene.html>



# PATH I: To the MEC

## Diagnostic Medical Sonography (DMS)

### 2023 Program Requirements

#### Ms. Judi Green (Program Director)

SDV 101 (“B”) or better

ENG 111 or Higher (“B”) or better

BIO 141 & BIO 142 (“B”) or better, within the last 5 years

PHY 100, PHY 101, PHY 201 or 202: (“B”), within the last 5 years

MTH 154 (“B”) or better

**COMING THIS FALL: DMS 100**

Minimum cumulative GPA: 2.5

TEAS (SCI, ENG, RDG, MTH) **50% or higher in each area**

Accept 14 students – Abdomen

Attend a Prospective Student Workshop within past 12 months

#### **Previous Bachelor’s Degree Required**

Accept 6 students – Vascular

Accept 8 students –ECHO

#### **Application Period**

**May 1 – May 15**

**\$45.33/hr, \$94,290 annual**

O\*NET Online

<https://www.onetonline.org/link/summary/29-2032.00>



#### **General Education Courses**

- PSY 200 Principles of PSY
  - Or PSY 201 & PSY 202
- HLT 141 Intro to Med Term
- HLT 220 Concepts of Disease
- Hum/Fine Arts (PHI 227 Bio Med Ethics)

<http://www.nvcc.edu/medical/divisions/allied/sonography.html>

# PATH I: To the MEC

## Emergency Medical Services (EMS)

2023 Program Requirements

**Ms. Wanda Gardner(Program Director)**

---

Minimum Cumulative GPA: 2.0

ENG 111 Placement

First Come/First Served

- Domicile priority

General Education Courses

- BIO 141, BIO 142 A&P 1&2
- PSY 230 Developmental Psychology
- SDV 101/100 College Success Skills
- PHI 220 Ethics

**Apply any time**

- <http://www.nvcc.edu/medical/divisions/allied/ems.html>

**\$24.09/hr, \$50,100 annual**

O\*NET Online

<https://www.onetonline.org/link/summary/29-2041.00>



# PATH I: To the MEC

## Health Information Management (HIM)

### 2023 Program Requirements

**Ms. Dana Pratt (Program Director)**

---

FULLY ONLINE PROGRAM STARTING FALL 2023!

SDV 101 (“C”) or better

ENG 111 or Higher (“C”) or better

CST 229 (“C”) or better

BIO 141 (“C”) or better completed within the past 10 years

HIM 111 (“C”) or better

Complete or self-place into MTH 154 or better

View online info session

Minimum Cumulative GPA: 2.0

First Come/First Served - Domicile priority

General Education Courses

Humanities/Fine Arts

PED 116 Lifetime fitness and wellness

Social/ behavioral science

**\$26.40/hr, \$54,900 annual**

O\*NET Online

<https://www.onetonline.org/link/summary/29-2071.00>



**Application period April 1-15**

•<https://www.nvcc.edu/medical/divisions/allied/him.html>

# PATH I: To the MEC

## Medical Laboratory Technology (MDL)

### 2023 Program Requirements

**Ms. Maria Torres-Pillot (Program Director)**

SDV 101 (“C”) or better

ENG 111 (“C”) or better

BIO 141 (“C”) or better

CHM 111 (“C”) or better

Eligible or self-place into MTH 161 or higher

Minimum Cumulative GPA: 2.0

Competitive Admissions Process

View online information session

Transferable Degree to VCU

General Education Courses

- BIO 142 A&P
- CST 229 Intercultural communication
- Social/Behavioral Science
- Humanities/Fine Arts

**\$30.04/hr, \$62,490 annual**

O\*NET Online

<https://www.onetonline.org/link/summary/29-2011.00>



**Application period February 15-March 1**

<https://www.nvcc.edu/medical/divisions/allied/medlabtech.html>

# PATH I: To the MEC Occupational Therapy Assistant (OCT)

2023 Program Requirements

**Dr. Kathryn Skibek (Program Director)**

---

SDV 101 (“C”) or better

ENG 111 or Higher (“C”) or better

BIO 141/142 (“C”) or better; completed within the last 5 years

HLT 141 (“C”) or better

Complete or self-place into MTH 154.

Minimum Cumulative GPA: 2.5

**MANDATORY Live Information Session**

Competitive Admissions

Video Statement (scheduled)

Impromptu Writing Sample

**Application Period May 1st– May 15<sup>th</sup>**

<https://www.nvcc.edu/medical/divisions/allied/occupational-therapy-assistant.html>

**\$34.51/hr, \$70,790 annual**

O\*NET Online

<https://www.onetonline.org/link/summary/31-2011.00>



General Education Courses

- Humanities/Fine Arts
- PSY 200 Principles of Psychology
- PSY 215 Abnormal Psychology
- PSY 230 Developmental Psychology

Transferable degree to Shenandoah University

# PATH I: To the MEC

## Physical Therapist Assistant (PTA)

### 2023 Program Requirements

**Ms. Jacqueline Maier, Program Director**

**Mandatory In-person Information Session**

**\$34.01/hr, \$70,740 annual**

O\*NET Online

<https://www.onetonline.org/link/summary/31-2021.00>

**ENG 111 (“B”) or better**

**BIO 145 (“B”) or better; completed in the last 10 years**

**HLT 141 (“B”) or better**

**Completed or self-placed into MTH 154.**

**Minimum Cumulative GPA: 2.5**

**TEAS Exam minimum of 50% in English, Reading, and the Anatomy and Physiology section of Science. (Please clarify with Program Director)**

**Clinical Observation Hours (4 hours)**

**Competitive Admissions Process**

### **Application Period**

- March 1-15 (First priority deadline)
- May 1– May 15 (Only if needed: Second priority deadline)



<https://www.nvcc.edu/medical/divisions/allied/therapyassistant.html>

**General Education Courses**

- SDV 101 or 100, PSY 200, MTH Elective, Humanities/ Fine Arts

# PATH I: To the MEC Radiography (RAD)

2023 Program Requirements

**Ms. Jarice Risper (Program Director)**

---

SDV 101 (“B”) or better

ENG 111 or Higher (“B”) or better

BIO 141/142 (“B”) or better completed within  
past 10 years

RAD 105 (“B”) or better

**MTH 161 complete or self-place**

Minimum cumulative GPA: 2.5 GPA

View online information session

General Education Courses

- HLT 141, PSY 200, HUM/FINE ARTS

**Application Period April 1-15**

**\$39.19/hr, \$81,520 annual**

O\*NET Online

<https://www.onetonline.org/link/summary/29-2034.00>



<https://www.nvcc.edu/medical/divisions/allied/radiography.html>



# PATH I: To the MEC Respiratory Therapy

2023 Program Requirements

**Ms. Sherleen Bose (Program Director)**

---

SDV 101 (“C”) or better

ENG 111 (“C”) or better

BIO 141/142 (“C”) or better completed  
with the past 10 years

HLT 141 (“C”) or better

RTH 120 (“B”) or better

Complete or self-place into MTH 154 or  
higher

Minimum Cumulative GPA: 2.5

Competitive Admissions Process

View online information session

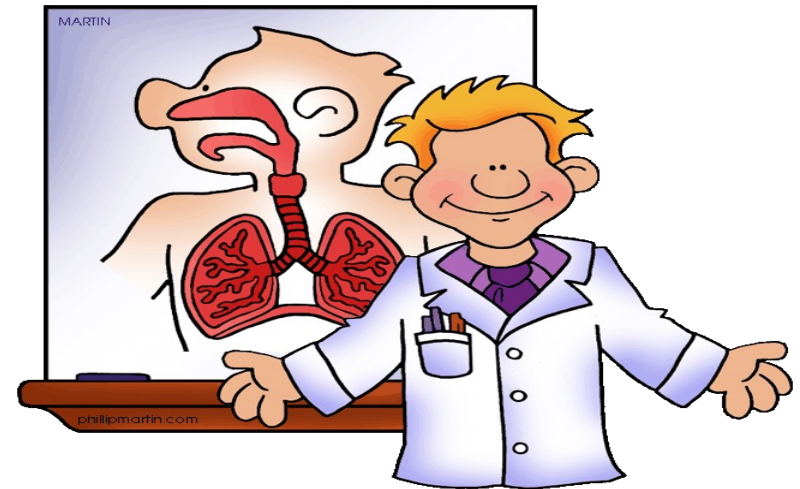
**Application Period May 15-31**

<https://www.nvcc.edu/medical/divisions/allied/radiography.html>

**\$39.41/hr, \$81,970 annual**

O\*NET Online

[29-1126.00 - Respiratory Therapists \(onetonline.org\)](https://onlinetoolsonline.org/29-1126.00-RespiratoryTherapists)



General Education Courses

- Hum/Fine Arts, CST 229, PED 116,  
Social/behavioral science



# PATH I: To the MEC Certificate Programs

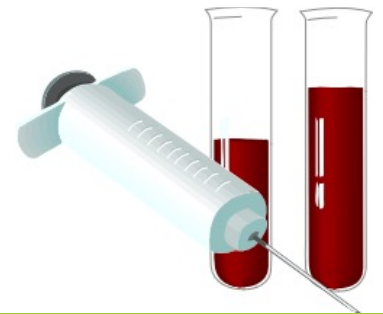
---

- Clinical Data Coding (CDC): FULLY ONLINE!
  - Apply April 1-15
- Medical Laboratory Assistant (MLA)
  - Apply February 15-March 1
- Phlebotomy (PBT)
  - Apply Sept 1-10 (Start in January); February 15-March 1 (start in August)
- Dental Assisting (DNA)
  - Apply May 1-15

All first come/first served. Accept until filled.

## Website

- <https://www.nvcc.edu/academics/divisions/health-sciences/>



# PATH I: Path to the MEC

---

## TO A MEC PROGRAM

### Semester 1:

SDV 101

ENG 111

BIO 141

PSY 200

MTH 154 ( Please see your program requirements)

### Semester 2:

HLT 143, or HIM 111

BIO 142

CST 100 or CST 110

ENG 112

Elective (DMS: HLT 220; EMS: HLT 250; PTA: PED 220; RTH: RTH 100; RAD: RAD 105)

### Semester 3:

MTH 245

Social Science/Behav Science Elective (OTA: PSY 215)

HUM/FA: ART 100, CST 130, CST 151, or MUS 121

Natural/Physical Science Elective (DH: BIO 150; DMS: PHY 101; MLT CHM 111)

Elective: HLT 110 (OTA: PSY 230)

### Semester 4:

HIS: HIS 101, or HIS 102

Elective: Suggested: PSY 240

Elective: Suggested: PSY 250

Humanities/Fine Arts Elective

Elective: Suggested: DIT 121

# PATH II: Pathway to a 4-year university: GMU

---

## B.S. Health Administration

### Semester 1:

SDV 101  
ENG 111  
BIO 101  
PSY 200  
MTH 154

### Semester 2:

HLT 143  
CST 229  
ENG 125  
BIO 141  
ITE 115

### Semester 3:

BIO 142  
MTH 245  
PSY 230  
HUM/FA: ART 100, CST 130, CST 151, or MUS 121  
HLT 230

### Semester 4:

HIS: HIS 101, HIS 102, or HIS 112  
CST 100  
ECO 202  
ENG 200 course (see advising sheet)  
PLS 211

# PATH II: Pathway to a 4-year university: GMU

---

## B.S. COMMUNITY HEALTH

### Semester 1:

SDV 101  
ENG 111  
BIO 101  
PSY 200  
MTH 154

### Semester 2:

HLT 143  
BIO 141  
CST 100 or CST 110  
ENG 112  
ITE 115

### Semester 3:

MTH 245  
GEO 219  
HUM/FA: ART 100, CST 130, CST 151, or MUS 121  
BIO 142  
HLT 110

### Semester 4:

HIS: HIS 101, or HIS 102  
GEO 200  
DIT 121  
ENG 200 course (see advising sheet)  
PSY 230

# PATH II: Pathway to a 4-year university: Marymount University

---

## B.S. HEALTH SCIENCES

### Semester 1:

SDV 101  
ENG 111  
BIO 101  
PSY 200  
MTH 154

### Semester 2:

HLT 141  
BIO 141  
CST 100  
ENG 112

### Semester 3:

MTH 245  
ECO 201, ECO 202, or SOC 200  
HUM/FA: ART 101, ART 102, OR MUS 121  
BIO 142  
HLT 110

### Semester 4:

HIS: HIS 101, HIS102, HIS 111, HIS 112, HIS 121, OR 122  
PSY 240  
PHI 227  
ENG 200 course (see advising sheet)  
DIT 121

# PATH II: Pathway to a 4-year university: Old Dominion University

---

## B.S. MEDICAL LABORATORY SCIENCE

### Semester 1:

SDV 100  
ENG 111  
BIO 101  
PSY 200  
MTH 154

### Semester 2:

HLT 141  
BIO 141  
CST 100 OR CST 110  
ENG 112  
CHM 111

### Semester 3:

MTH 245  
SOC 200  
HUM/FA: (see advising sheet)  
CHM 112  
BIO 142

### Semester 4:

HIS: HIS 101, HIS102, HIS 111, HIS 112, HIS 121, OR 122  
PHI 220  
CHM 241  
ENG 200 course (see advising sheet)  
CHM 242

# What is My First Step ?

---

- ❑ Apply to NOVA
- ❑ **Take Math and English Placement (depending on program requirements)**
- ❑ Watch an Information Session
  - Mandatory for application
  - Should answer most of your questions or help you to focus your questions when meeting with an academic advisor or counselor
    - <https://www.nvcc.edu/medical/infosessions/index.html>
    - Provides a strategy for applying to program
  - All Info Sessions are on-line except Physical Therapist Assistant, Occupational Therapy Assistant, and Diagnostic Medical Sonography

# The Sciences

---

BIO 101 General Biology I

BIO 141-142 (Anatomy & Physiology I & II) and 150(Intro Micro Biology)

BIO 141-142 (Anatomy & Physiology I & II) and 205 (Micro Biology)

- Prerequisites to get into BIO 205
  - 1 year of Chemistry
  - 1 year of Biology

**NOVA no longer offers NAS 161 and NAS 162**

BIO 145 (PTA/DNA/CDC)

Must Be taken within **ten years (except for DMS/OTA 5-years)** at the start of the program.

- This rule does not apply for Nursing's high school requirements.





# Things To Remember

---

Core Coursework: ENG 111, SDV 101, Sciences, BIO 101

Acceptable Science Sequence for Nursing and Dental Hygiene:

- BIO 141, BIO 142, and BIO 150
- BIO 141, BIO 142, and BIO 205 (two semesters of Chemistry required)
- BIO 231, BIO 232, and one of the Microbiology courses above

Some variations include:

- PTA only requires BIO 145 and HLT 141
- DMS requires extra courses, including MTH 161 or above
- MDL: CHM 111
- RAD: MTH 161
- Major-specific intro courses: RAD, RTH
- Nursing: PSY 230

# Health Sciences and Nursing

---

**NOVA** Northern Virginia  
Community College  
Medical Education Campus



<https://www.nvcc.edu/medical/index.html>

<https://www.nvcc.edu/academics/divisions/health-sciences/index.html>

<https://www.nvcc.edu/academics/divisions/nursing/index.html>

# Common Courses for Nursing Transfer

---

Anatomy & Physiology (BIO 141/142)

Microbiology (BIO 150 or BIO 205)

NAS 161/162 only works at SOME schools, usually if the student is applying for an RN to BSN program

Statistics (usually MTH 245, sometimes MTH 154)

Ethics (usually Bio-medical, PHI 227)

Nutrition (DIT 121, may not be necessary for RN to BSN)

Developmental Psych (PSY 230, PSY 231 & PSY 232)

Sometimes CHM

**Please note this varies year to year. This information was based on last year acceptance.**

# Program Start

---

Health Sciences – **Fall** semester

- Phlebotomy (CSC Fall) and Spring

Nursing – **Fall and Spring** Semester



# What if I have credits from another college?

---

- According to the Credit for Prior Learning Manual: [CPL: Section 1-Credit from Postsecondary Institutions Procedures and Policies - Northern Virginia Community College - Acalog ACMS™ \(nvcc.edu\)](#)
- General Education, PED and SDV Transfer Credit for Students with Previous Degrees Students who have attended another regionally accredited United States institution of higher education should request that an official transcript be submitted for evaluation. **Credit will be awarded on a course-by course basis.** In addition, students who have graduated with an associate, baccalaureate or higher degree from a regionally accredited United States institution of higher education are considered to have fulfilled NOVA's SDV requirement.
- Students will receive an email from the CRO once the transcript has been evaluated

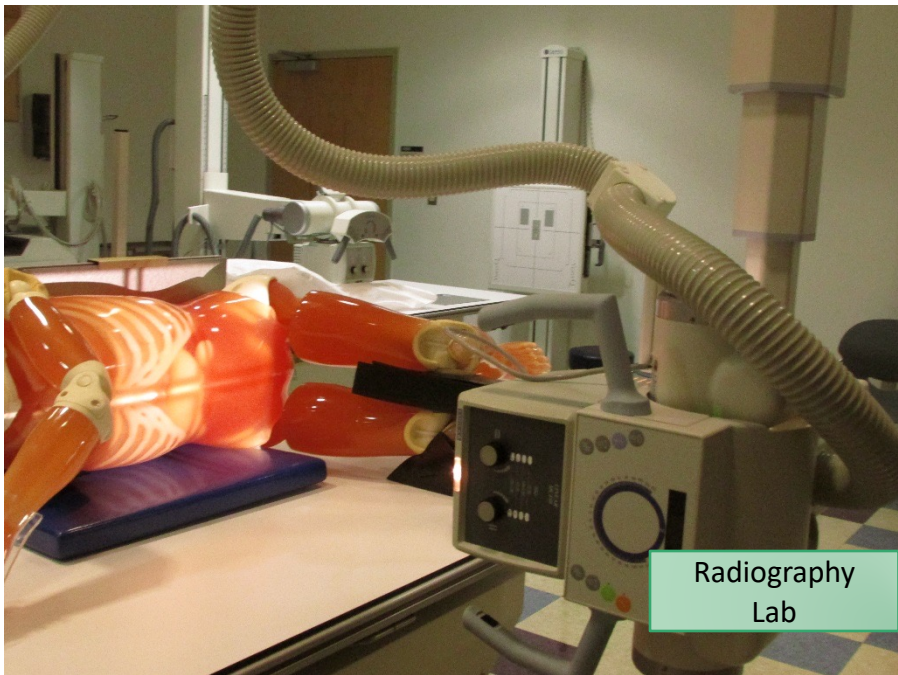
## View transfer credit

- MY NOVA – Academic Advisement Report

## Understanding transfer credits

- Plan specific courses transferred
- EEE Credits





Radiography Lab



Simulation Lab



Nursing Lab



Dental Lab

# Contact Information

---

Students should be directed to email [MECCounseling@nvcc.edu](mailto:MECCounseling@nvcc.edu) for answers to questions they may have about the MEC programs.

Kimberly Nicely  
[knicely@nvcc.edu](mailto:knicely@nvcc.edu)  
703-822-6662

Lisa Liu [lliu@nvcc.edu](mailto:lliu@nvcc.edu)  
703-822-6634

Amy Zuaso  
[azuaso@nvcc.edu](mailto:azuaso@nvcc.edu)  
703-822-6532

# QUESTIONS?



## Stay Connected with us

Facebook: <https://www.facebook.com/NOVAMECSS/>

MEC Blog: <https://blogs.nvcc.edu/mecexchange/>

NOVA website about transfer: <https://www.nvcc.edu/transfer/>