

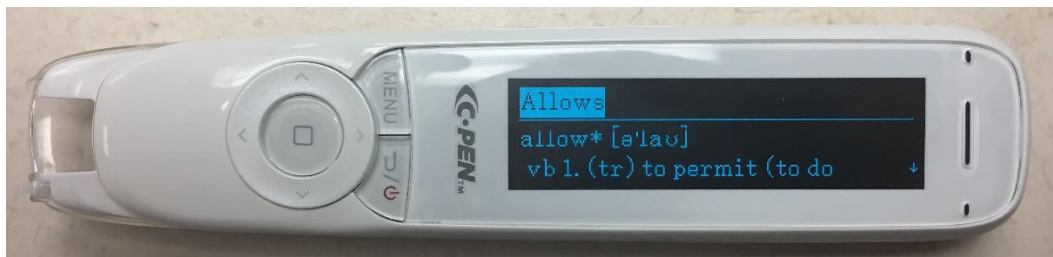
How to use the Reader Pen

Text Reader:



The text reader feature is used the same way as the Exam Reader. Please see those instructions if needed.

Dictionary



1. Select Dictionary
 2. Press the menu button to access Dictionary Settings
 - a. Select History to view previously defined words
 - b. Select Reading to set reading speed, and turn on/off the read definition and read word features
 - c. Press the return button twice to return to the dictionary screen
 3. Use Reader Pen to highlight a word that needs defining
 4. View/Listen to the definition, press "back" to select a new word
- To Change Dictionary/Language Options
1. Open dictionary function
 2. Press the Left button to change the language & dictionary option.

Scan to File:

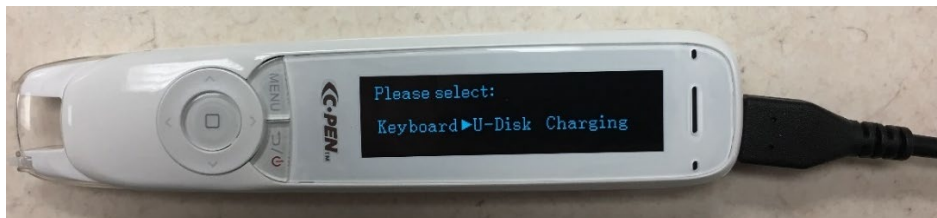


This function is used like the Text Reader function, but all highlighted text is saved in the Reader Pen and can later be downloaded to a computer.

Recorder

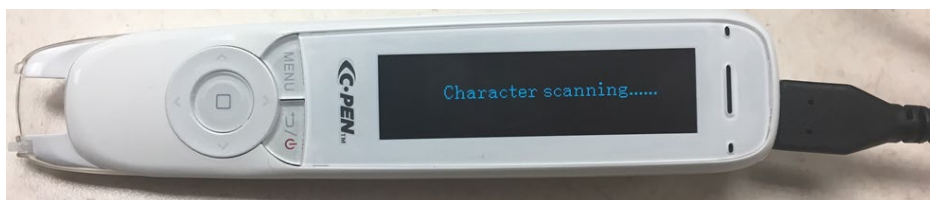
1. Turn on device, scroll to select “Recorder”, select Record
2. Press OK to start/stop recording
3. Access recordings in two ways;
 - a. Open Recorder and scroll down to select “Play Recording”
 - b. Connect ReaderPen to computer and open “Recorder” folder

Connecting the Reader Pen to the Computer



When the ReaderPen is connected to the computer, 3 features are enabled; Keyboard, U-Disk and Charging.

Keyboard Feature

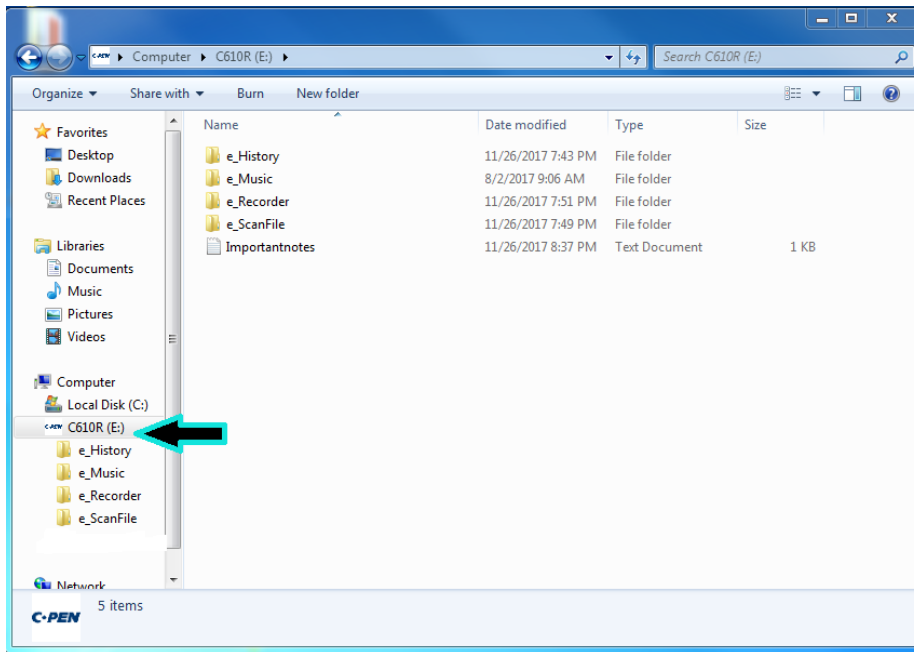


The Keyboard feature is used to scan and import text directly to the computer. The ReaderPen does not read the text aloud while the Keyboard function is in use. Enable Text to Speech software to hear it read from the computer.

1. Connect the ReaderPen to the computer, turn on device and select keyboard
2. Open a new Word/Google Drive document and set the cursor on the page
3. Scan desired text, save document and disconnect the Reader Pen

Using the U-disk Feature

1. Select U-disk to access saved text and saved audio recordings.



Select the C-Pen Icon, and you will be directed to 4 folders; e_History, e_Music, e_Recorder, e_ScanFile.

Select History to access previous dictionary searches.

Select Recorder to access saved audio recordings.

Select ScanFile to access saved text.

2. Open the desired folder
3. Select the desired file, and right click and select "Open With.."
4. Select Word (or any other word processing feature).
5. Word will open and saved text will be imported into a new document.