

Office of Institutional
Effectiveness and Student
Success Initiatives



Indicators of
Institutional
Effectiveness

November 2015



Northern Virginia Community College

Indicators of Institutional Effectiveness 2013–2014

Report No. 70-15

Office of Institutional Effectiveness and Student Success Initiatives

November 2015

NORTHERN VIRGINIA COMMUNITY COLLEGE

Office of Institutional Effectiveness and Student Success Initiatives

The purpose of the Office of Institutional Effectiveness and Student Success Initiatives is to conduct analytical studies and provide information in support of institutional planning, policy formulation, and decision making. In addition, the office provides leadership and support in research-related activities to members of the NOVA community engaged in planning and evaluating the institution's success in accomplishing its mission.

4001 Wakefield Chapel Road
Annandale, Virginia 22003-3796
703-323-3129
www.nvcc.edu/oir

Indicators of Institutional Effectiveness

Table of Contents

Student Access	1
Indicator 1. NOVA Unduplicated Annual Headcount by Campus: 2011-12 to 2013-14	1
Indicator 2. NOVA Annual FTES by Campus: 2011-12 to 2013-14	1
Indicator 3. Location/Venue FTES: 2011-12 to 2013-14	2
Indicator 4. Extended Learning Institute (ELI) Annual FTES by Campus: 2011-12 to 2013-14	2
Indicator 5. Dual Enrollment Headcount: 2011-12 to 2013-14	3
Indicator 6. Recent High School Graduates Attending NOVA by Campus: Fall 2011 to Fall 2013	3
Indicator 7. Continuing Education (Non-Credit) Enrollment by Campus: 2011-12 to 2013-14	4
Indicator 8. Continuing Education/Workforce Development Revenue by Campus: FY 2011–12 to FY 2013–14	4
Student Success	5
Indicator 9a. Fall-to-Fall Retention of First-Time, Full-Time Students by Campus: 2010-11 to 2012-13	5
Indicator 9b. Fall-to-Spring Retention of First-Time, Full-Time Students by Campus: 2011-12 to 2013-14	5
Indicator 10. Number of NOVA Graduates by Campus: 2011-12 to 2013-14	6
Indicator 11. Number of Students with Financial Aid Awards (Unduplicated): 2011-12 to 2013-14	6
Indicator 12. Number of Students Completing a FAFSA: 2011-12 to 2013-14	7
Faculty and Staff	8
Indicator 13. Faculty and Staff at NOVA: 2011-12 to 2013-14	8
Indicator 14. Nine-Month Teaching Faculty Diversity: October 2011 to October 2013	8
System-wide Indicators	9

Student Access

Indicator 1. NOVA Unduplicated Annual Headcount by Campus: 2011-12 to 2013-14

Campus	2011-12	2012-13	2013-14
Alexandria	18,166	18,572	18,286
Annandale	21,580	22,511	22,493
Loudoun	12,138	12,388	12,731
Manassas	9,888	10,487	10,592
Medical Education	3,827	3,475	3,286
Woodbridge	11,197	11,202	11,073
College	76,796	78,635	78,461

Source: OIR IRIS files

Indicator 2. NOVA Annual FTES by Campus: 2011-12 to 2013-14

Campus	2011-12	2012-13	2013-14
Alexandria	7,940	7,756	7,415
Annandale	12,469	12,763	12,597
Loudoun	5,295	5,322	5,474
Manassas	3,428	3,637	3,884
Medical Education	1,122	1,011	958
Woodbridge	5,347	5,232	5,230
College	35,601	35,721	35,559

Note: Due to rounding, campus numbers may not sum to College total.

Source: OIR IRIS files

Indicator 3.**Location/Venue FTES:
2011-12 to 2013-14**

Location/Venue	2011-12	2012-13	2013-14
Alexandria	7,017	6,778	6,489
Arlington	38	42	0
Annandale	10,781	10,853	10,516
Loudoun	3,858	3,897	3,962
Reston	534	479	521
Manassas	3,180	3,366	3,597
Medical Education	766	736	712
Woodbridge	4,234	4,053	4,023
ELI	5,193	5,517	5,739
College	35,601	35,721	35,559

Source: OIR IRIS files

**Indicator 4. Extended Learning Institute (ELI) Annual FTES
by Campus: 2011-12 to 2013-14**

Campus	2011-12	2012-13	2013-14
Alexandria	885	936	926
Annandale	1,688	1,910	2,080
Loudoun	903	946	992
Manassas	248	270	287
Medical Education	356	275	246
Woodbridge	1,112	1,180	1,208
College	5,193	5,517	5,739

Note: Due to rounding, campus numbers may not sum to College total.

Source: OIR IRIS files

**Indicator 5. Dual Enrollment Headcount:
2011-12 to 2013-14**

Campus	2011-12	2012-13*	2013-14*
Alexandria	559	633	787
Annandale	402	500	568
Loudoun	581	657	821
Manassas	479	486	458
Medical Education	39	15	21
Woodbridge	199	187	196
College	2,259	2,478	2,851

*For 2012-13 and 2013-14, EMPLID was used as student identifier for processing data.

Source: OIR IRIS files

**Indicator 6. Recent High School Graduates Attending NOVA
by Campus: Fall 2011 to Fall 2013¹**

Campus	Fall 2011	Fall 2012	Fall 2013
Alexandria	959	1,008	925
Annandale	1,299	1,390	1,510
Loudoun	938	1,038	1,110
Manassas	1,122	1,153	1,254
Woodbridge	867	908	955
College	5,185	5,497	5,754

Note: Data represent the number of all recent public high school graduates in NOVA's service area enrolled at the College in the Fall semester.

¹The campus headcount for high school graduates is based on high school assignments to individual campuses by OIR and is unduplicated. No high schools are assigned to the Medical Education Campus.

Indicator 7. Continuing Education (Non-Credit) Enrollment by Campus: 2011-12 to 2013-14*

Campus	2011-12	2012-13	2013-14
Alexandria	4,412	3,745	4,313
Annandale	7,110	8,264	8,015
Loudoun	4,331	4,117	3,566
Manassas	2,131	2,199	2,375
Medical Education	1,622	1,645	1,646
Woodbridge	2,311	1,855	1,743
Custom Contracts**	1,388	2,126	1,884
College	23,279	23,951	23,542

*Duplicated enrollment based on semester

**Custom contracts are taught at the client's venue. As of fiscal year 2012, contracts are listed as non-campus-based.

Source: Workforce Development and Continuing Education, NOVA

Indicator 8. Continuing Education/Workforce Development Revenue by Campus: FY 2011-12 to FY 2013-14

Campus	FY 2011-12*	FY 2012-13	FY 2013-14
Alexandria	—	—	—
Annandale	—	—	—
Loudoun	—	—	—
Manassas	—	—	—
Medical Education	—	—	—
Woodbridge	—	—	—
College	\$11,692,527	\$10,409,642	\$10,750,049

*During fiscal year 2012, the Workforce Development division changed its organizational structure from campus-based to central-based; therefore, only the College-wide total is shown.

Source: Budget Office, NOVA

Student Success

Indicator 9a. Fall-to-Fall Retention of First-Time, Full-Time Students² by Campus: 2010-11 to 2012-13

Campus	2010-11 (%)	2011-12 (%)	2012-13 (%)
Alexandria	62.7	63.4	56.0
Annandale	72.9	74.8	73.6
Loudoun	64.5	70.3	67.6
Manassas	69.1	72.5	67.6
Medical Education	56.6	76.2	54.8
Woodbridge	65.6	67.4	66.1
College	67.7	70.4	67.3

Source: OIR IRIS files

Indicator 9b. Fall-to-Spring Retention of First-Time, Full-Time Students³ by Campus: 2011-12 to 2013-14

Campus	2011-12(%)	2012-13(%)	2013-14(%)
Alexandria	85.5	86.8	85.7
Annandale	90.1	88.5	87.3
Loudoun	87.5	86.3	82.6
Manassas	88.0	88.8	87.1
Medical Education	92.1	82.3	87.9
Woodbridge	87.8	86.0	86.7
College	88.2	87.4	86.1

Source: OIR IRIS files and PeopleSoft queries

² Retention is defined as the percentage of first-time, full-time students enrolled at NOVA in a Fall semester returning to the College the following **Fall**.

³ Retention is defined as the percentage of first-time, full-time students enrolled at NOVA in a Fall semester returning to the College the following **Spring**.

**Indicator 10. Number of NOVA Graduates by Campus:
2011-12 to 2013-14**

Campus	2011-12	2012-13	2013-14
Alexandria	1,208	1,231	1,275
Annandale	2,120	2,023	1,917
Loudoun	1,067	985	972
Manassas	840	841	859
Medical Education	729	614	595
Woodbridge	962	986	980
College	6,926	6,680	6,598

Source: OIR IRIS files

**Indicator 11. Number of Students with Financial Aid Awards*
(Unduplicated): 2011-12 to 2013-14**

Campus	2011-12	2012-13	2013-14
Alexandria	4,883	5,641	5,858
Annandale	4,680	5,496	5,907
Loudoun	2,458	2,840	3,259
Manassas	2,166	2,690	3,236
Medical Education	1,210	1,252	1,288
Woodbridge	3,449	3,920	4,164
College	18,846	21,839	23,712

*Includes need and non-need-based aid

Source: Financial Aid Office, NOVA

**Indicator 12. Number of Students Completing a FAFSA:
2011-12 to 2013-14**

Campus	2011-12	2012-13	2013-14
Alexandria	10,667	11,776	11,113
Annandale	8,970	10,245	11,395
Loudoun	5,432	5,931	6,331
Manassas	4,873	5,441	6,242
Medical Education	2,807	2,828	2,741
Woodbridge	6,853	7,600	8,352
No Campus Information	360	515	—
College	39,962	44,336	46,174

Source: Financial Aid Office, NOVA

Faculty and Staff

Indicator 13.

Faculty and Staff at NOVA: 2011-12 to 2013-14

	2011-12	2012-13	2013-14	% Change 2011-12 to 2013-14
Twelve-Month Administrative Faculty	100	105	97	-3.0%
Professional Faculty	125	148	146	16.8%
Nine-Month Faculty	674	686	714	5.9%
Temporary Faculty	2,251	2,351	2,341	4.0%
Classified Staff	903	963	962	6.5%
Total	4,053	4,253	4,260	5.1%

Source: Human Resources, NOVA

Indicator 14.

Nine-Month Teaching Faculty Diversity: October 2011 to October 2013

Campus	October 2011 Minority Faculty	October 2012 Minority Faculty	October 2013 Minority Faculty
Alexandria	27.5%	29.4%	32.5%
Annandale	27.4%	29.4%	28.6%
Loudoun	18.8%	22.3%	23.1%
Manassas	28.2%	29.7%	30.3%
Medical Education	16.0%	21.2%	24.5%
Woodbridge	27.1%	25.5%	29.2%
College	25.3%	27.3%	28.6%

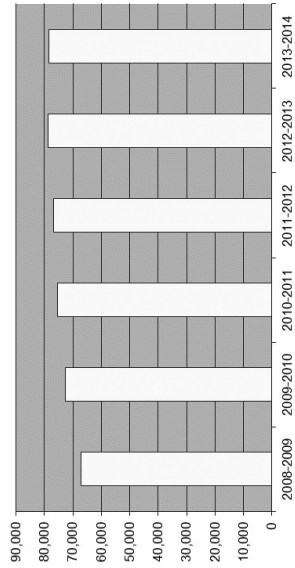
Source: Human Resources, NOVA

System-Wide Indicators

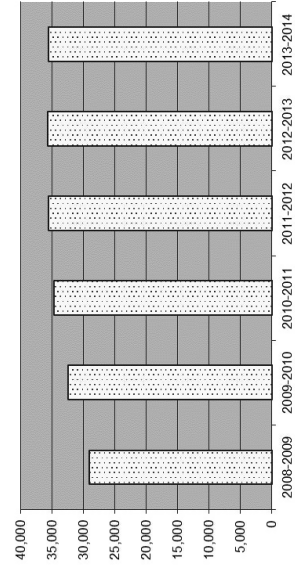
NOVA Annual Enrollment: 2008-09 to 2013-14

	2008- 2009	% Change	2009- 2010	% Change	2010- 2011	% Change	2011- 2012	% Change	2012- 2013	% Change	2013- 2014	% Change	6-Yr % Change
Enrollment	67,175	4.2%	72,563	8.0%	75,490	4.0%	76,796	1.7%	78,635	2.4%	78,461	-0.2%	16.8%
Headcount	29,153	5.2%	32,537	11.6%	34,697	6.6%	35,601	2.6%	35,721	0.3%	35,559	-0.5%	22.0%

NOVA Annual Enrollment: Headcount



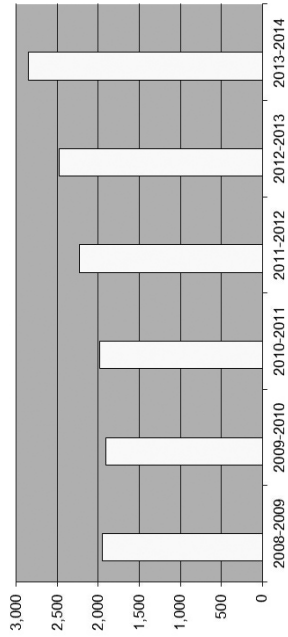
NOVA Annual Enrollment: FTES



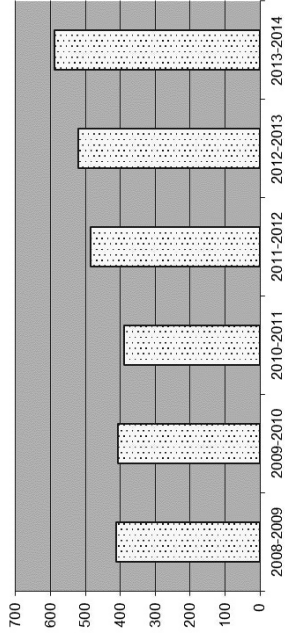
NOVA Dual Enrollment: 2008–09 to 2013–14

	2008–2009	% Change	2009–2010	% Change	2010–2011	% Change	2011–2012	% Change	2012–2013	% Change	2013–2014	% Change	6-Yr % Change
Enrollment	1,947	9.3%	1,908	-2.0%	1,983	3.9%	2,231	12.5%	2,478	11.1%	2,851	15.1%	46.4
Headcount	413	-20.6%	408	-1.2%	388	-4.9%	484	24.7%	521	7.6%	590	13.2%	42.9

NOVA Dual Enrollment: Headcount



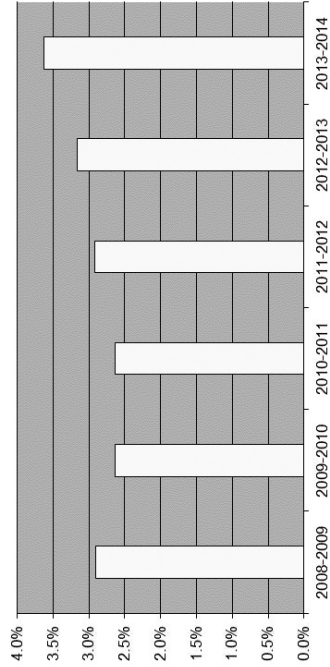
NOVA Dual Enrollment: FTEs



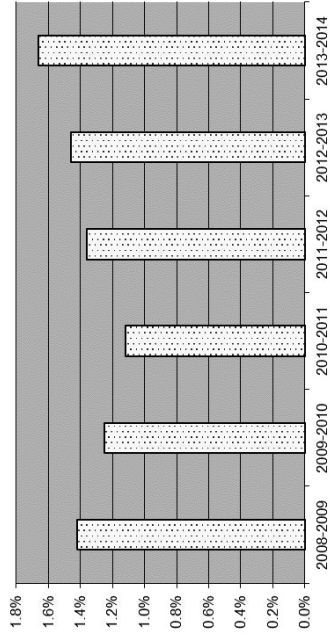
NOVA Dual Enrollment as Percentage of Total Enrollment: 2008–09 to 2013–14

Enrollment	2008–2009	2009–2010	2010–2011	2011–2012	2012–2013	2013–2014	6-Yr Change in %
Headcount	2.90%	2.63%	2.63%	2.91%	3.16%	3.63%	0.73%
FTEs	1.42%	1.25%	1.12%	1.36%	1.46%	1.66%	0.24%

NOVA Dual Enrollment as Percentage of Total Enrollment
by Headcount



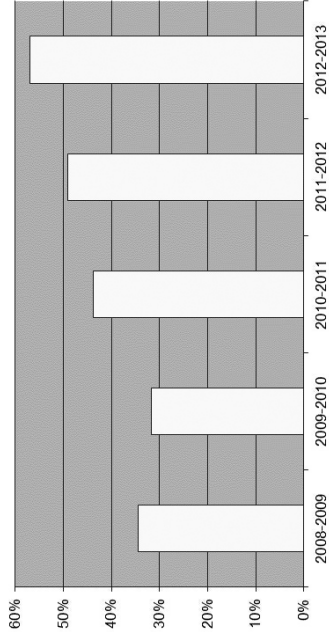
NOVA Dual Enrollment as Percentage of Total Enrollment
by FTEs



NOVA Transfer Program Graduates: 2008–09 to 2012–13*

	# of Grads	# Transferred	% Transferred	Change in %
2008–2009	2,255	778	34.5%	—
2009–2010	2,917	927	31.8%	-2.7%
2010–2011	3,646	1,600	43.9%	12.1%
2011–2012	4,217	2,072	49.1%	5.2%
2012–2013	4,434	2,522	56.9%	7.8%
5-Yr Change in % 2008–2009 to 2012–2013				22.4%

NOVA Percentage of Transfer Program Graduates Who Transferred

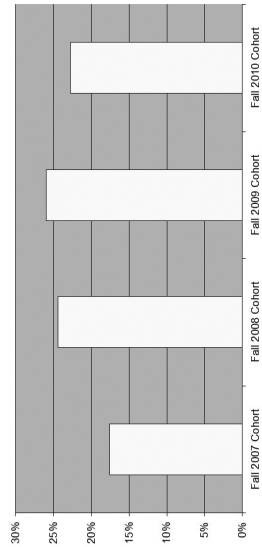


*These data will not match previously released historical data. The methodology for calculating the number of transfer program graduates changed. Students who are concurrently enrolled with the VCCS and four-year institutions are excluded. In addition, the percentage of transfer program graduates who transferred was determined using data from National Student Clearinghouse. In past reports, data from both National Student Clearinghouse and SCHEV were used to determine the transfer rate.

NOVA Graduation Rates for Fall Cohorts: 2001–2010*

Fall Cohort	Cohort	Number of Graduates	Graduation Rate
Fall 2001 Cohort	1,607	198	12.3%
Fall 2002 Cohort	1,643	187	11.4%
Fall 2003 Cohort	1,657	183	11.0%
Fall 2004 Cohort	3,033	403	13.3%
Fall 2005 Cohort	3,112	413	13.3%
Fall 2006 Cohort	3,967	571	14.4%
Fall 2007 Cohort	4,598	810	17.6%
Fall 2008 Cohort	4,106	1,000	24.4%
Fall 2009 Cohort	4,738	1,234	26.0%
Fall 2010 Cohort	4,577	1,043	22.8%

NOVA Graduation Rates for Fall Cohorts

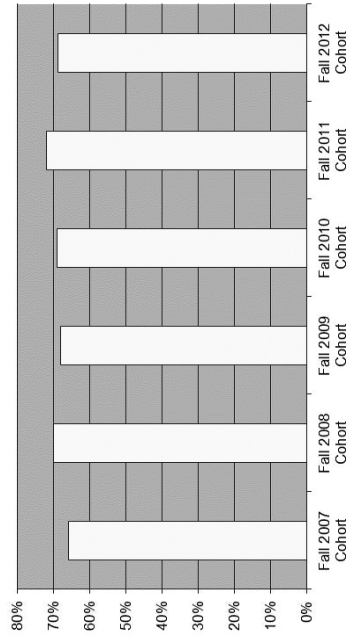


*Includes dual enrolled students. Beginning with the Fall 2007 cohort, the methodology for calculating the graduation rate changed. 150% of time includes the following summer.

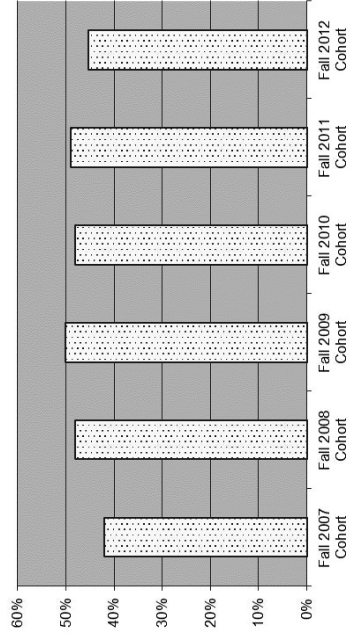
NOVA Retention Rates for Fall Cohorts: 2007–2012

	Fall 2007 Cohort		Fall 2008 Cohort		Fall 2009 Cohort		Fall 2010 Cohort		Fall 2011 Cohort		Fall 2012 Cohort	
	FT	PT	FT	PT	FT	PT	FT	PT	FT	PT	FT	PT
Retention Cohort	4,586	3,135	4,106	2,715	4,738	2,594	4,577	2,667	4,848	2,879	5,137	3,146
Re-enrolled	2,991	1,321	2,880	1,303	3,200	1,290	3,136	1,263	3,450	1,422	3,541	1,425
Graduated	18	8	8	4	13	0	5	5	18	2	2	1
Total	3,009	1,329	2,888	1,307	3,213	1,290	3,141	1,268	3,468	1,424	3,543	1,426
Retention Rate	66%	42%	70%	48%	68%	50%	69%	48%	72%	49%	69%	45%

NOVA Retention Rates of Full-Time Students



NOVA Retention Rates of Part-Time Students



NOVA Mission and Strategic Goals: 2005–2015

Mission

With commitment to the values of access, opportunity, student success, and excellence, the mission of Northern Virginia Community College is to deliver world-class in-person and online post-secondary teaching, learning, and workforce development to ensure our region and the Commonwealth of Virginia have an educated population and globally competitive workforce.

Strategic Goals

Goal 1. Student Success – Northern Virginia Community College will move into the top tier of community colleges with respect to the college readiness, developmental course completion, retention, graduation, transfer, and career placement of its students.

Goal 2. Access – Northern Virginia Community College will increase the number and diversity of students being served to mirror the population growth of the region.

Goal 3. Teaching and Learning – Northern Virginia Community College will focus on student success by creating an environment of world-class teaching and learning.

Goal 4. Excellence – Northern Virginia Community College will develop ten focal points of excellence in its educational programs and services that will be benchmarked to the best in the nation and strategic to building the College's overall reputation for quality.

Goal 5. Leadership – Northern Virginia Community College will serve as a catalyst and a leader in developing educational and economic opportunities for all Northern Virginians and in maintaining the quality of life and economic competitiveness of the region.

Goal 6. Partnerships – Northern Virginia Community College will develop strategic partnerships to create gateways of opportunity and an integrated educational system for Northern Virginians who are pursuing the American Dream.

Goal 7. Resources – Northern Virginia Community College will increase its annual funding by \$100 million and expand its physical facilities by more than one million square feet in new and renovated space. This includes the establishment of two additional campuses at epicenters of the region's population growth, as well as additional education and training facilities in or near established population centers.

Goal 8. Emergency Preparedness and Continuity of Operations – Northern Virginia Community College will be recognized as a leader among institutions of higher education in Virginia for its development and testing of emergency response and continuity of operation plans.

NORTHERN VIRGINIA COMMUNITY COLLEGE BOARD

Dr. Michael Wooten, Chair
Prince William County

Mr. Todd Rowley, Vice Chair
Fairfax County

Scott Ralls, Ph.D.
Secretary to the College Board

Ms. Susan Kearney
City of Falls Church

Dr. Kerstin Carlson Le Floch
City of Fairfax

Jennifer McGarey, J.D.
Fairfax County

Mr. Jason Middough
City of Alexandria

Mr. Bruce Neilson
Fairfax County

Ms. Rosie O'Neil
Arlington County

Mr. Rick Pearson
Loudoun County

Dr. James L. White
City of Manassas

Hong Xu, J.D.
Manassas Park

www.nvcc.edu
703-323-3000

