

# Graduation Rates of First-Time to NOVA, Program-Placed Students by Full-/Part-Time Status and Demographics: Fall 2006 through Fall 2009 Cohorts

Research Report No. 11-14

Office of Institutional Research, Planning, and Assessment  
SEPTEMBER 2014

## **NORTHERN VIRGINIA COMMUNITY COLLEGE**

### **OFFICE OF INSTITUTIONAL RESEARCH, PLANNING, AND ASSESSMENT**

The purpose of the Office of Institutional Research, Planning, and Assessment is to conduct analytical studies and provide information in support of institutional planning, policy formulation and decision making. In addition, the office provides leadership and support in research related activities to members of the NOVA community engaged in planning and evaluating the institution's success in accomplishing its mission.

When citing data from this report, the Northern Virginia Community College (NOVA) Office of Institutional Research, Planning, and Assessment must be cited as the source.

4001 Wakefield Chapel Road  
Annandale, VA 22003-3796  
(703) 323-3129

[www.nvcc.edu/oir](http://www.nvcc.edu/oir)

## Table of Contents

Introduction .....	1
Section 1. Graduation Rates of First-Time to NOVA, Program-Placed Students by Full-/Part-Time Status: Fall 2006 through Fall 2009 Cohorts .....	2
Section 2. Graduation Rates of First-Time to NOVA, Program-Placed Students by Full-/Part-Time Status and Gender: Fall 2006 through Fall 2009 Cohorts.....	4
Section 3. Graduation Rates of First-Time to NOVA, Program-Placed Students by Full-/Part-Time Status and Age: Fall 2006 through Fall 2009 Cohorts .....	6
Section 4. Graduation Rates of First-Time to NOVA, Program-Placed Students by Full-/Part-Time Status and Race/Ethnicity: Fall 2006 through Fall 2009 Cohorts.....	9
Section 5. Graduation Rates of First-Time to NOVA, Program-Placed Students by Full-/Part-Time Status and Program Placement: Fall 2006 through Fall 2009 Cohorts .....	12

## List of Tables

Table 1. Graduation Rates by Time to Graduation and Full-/Part-Time Status: Fall 2006 through Fall 2009 Cohorts .....	2
Table 2. Graduation Rates by Time to Graduation, Full-/Part-Time Status, and Gender: Fall 2006 through Fall 2009 Cohorts.....	4
Table 3. Graduation Rates of Full-Time Students by Time to Graduation and Age: Fall 2006 through Fall 2009 Cohorts .....	6
Table 4. Graduation Rates of Part-Time Students by Time to Graduation and Age: Fall 2006 through Fall 2009 Cohorts .....	7
Table 5. Graduation Rates of Full-Time Students by Time to Graduation and Race/Ethnicity: Fall 2006 through Fall 2009 Cohorts.....	9
Table 6. Graduation Rates of Part-Time Students by Time to Graduation and Race/Ethnicity: Fall 2006 through Fall 2009 Cohorts .....	10
Table 7. Graduation Rates of Full-Time Students by Time to Graduation and Program Placement: Fall 2006 through Fall 2009 Cohorts .....	12
Table 8. Graduation Rates of Part-Time Students by Time to Graduation and Program Placement: Fall 2006 through Fall 2009 Cohorts .....	13

## List of Figures

Figure 1. Graduation Rates by Time to Graduation of Full-Time Students by Time to Graduation: Fall 2006 through Fall 2009 Cohorts .....	3
Figure 2. Graduation Rates by Time to Graduation of Part-Time Students by Time to Graduation: Fall 2006 through Fall 2009 Cohorts .....	3
Figure 3. Four-Year Graduation Rates of Full-Time Students by Gender: Fall 2006 through Fall 2009 Cohorts .....	5
Figure 4. Four-Year Graduation Rates of Part-Time Students by Gender: Fall 2006 through Fall 2009 Cohorts .....	5
Figure 5. Four-Year Graduation Rates of Full-Time Students by Age: Fall 2006 through Fall 2009 Cohorts .....	8
Figure 6. Four-Year Graduation Rates of Part-Time Students by Age: Fall 2006 through Fall 2009 Cohorts .....	8
Figure 7. Four-Year Graduation Rates of Full-Time Students by Race/Ethnicity: Fall 2006 through Fall 2009 Cohorts .....	11
Figure 8. Four-Year Graduation Rates of Part-Time Students by Race/Ethnicity: Fall 2006 through Fall 2009 Cohorts .....	11
Figure 9. Graduation Rates of Full-Time Students by Program Placement: Fall 2006 through Fall 2009 Cohorts .....	14
Figure 10. Graduation Rates of Part-Time Students by Program Placement: Fall 2006 through Fall 2009 Cohorts .....	14

# **Graduation Rates of First-Time to NOVA, Program-Placed Students by Full-/Part-Time Status and Demographics: Fall 2006 through Fall 2009 Cohorts**

## **Introduction**

This Report presents data on graduation rates of first-time to NOVA, program-placed students by enrollment status (either full-time or part-time) and demographics for the Fall 2006 through Fall 2009 cohorts.<sup>1</sup>

The data in this Report reveal that the graduation rates of full-time students were consistently higher than those of part-time students in each cohort. When enrollment status and demographics are considered, data show the following trends.

- Female students graduated from NOVA within four years at a higher rate than male students, regardless of full- or part-time status.
- Younger students (ages 21 and under) tended to have higher graduation rates compared to older students (ages 45 and older).
- Among racial groups, Asian and White students had the highest graduation rates in each cohort, while Black students showed the lowest graduation rates in all cohorts.
- Among both full- and part-time students, students enrolled in A.A. and A.S. degree programs had the highest graduation rates, while students enrolled in A.A.A. degree programs had the lowest graduation rates.

---

<sup>1</sup> "Program-placed" refers to students who are enrolled in the A.A., A.S., A.A.A., or A.A.S. degree programs or in a certificate program.

**Section 1. Graduation Rates of First-Time to NOVA, Program-Placed Students by Full-  
/Part-Time Status: Fall 2006 through Fall 2009 Cohorts**

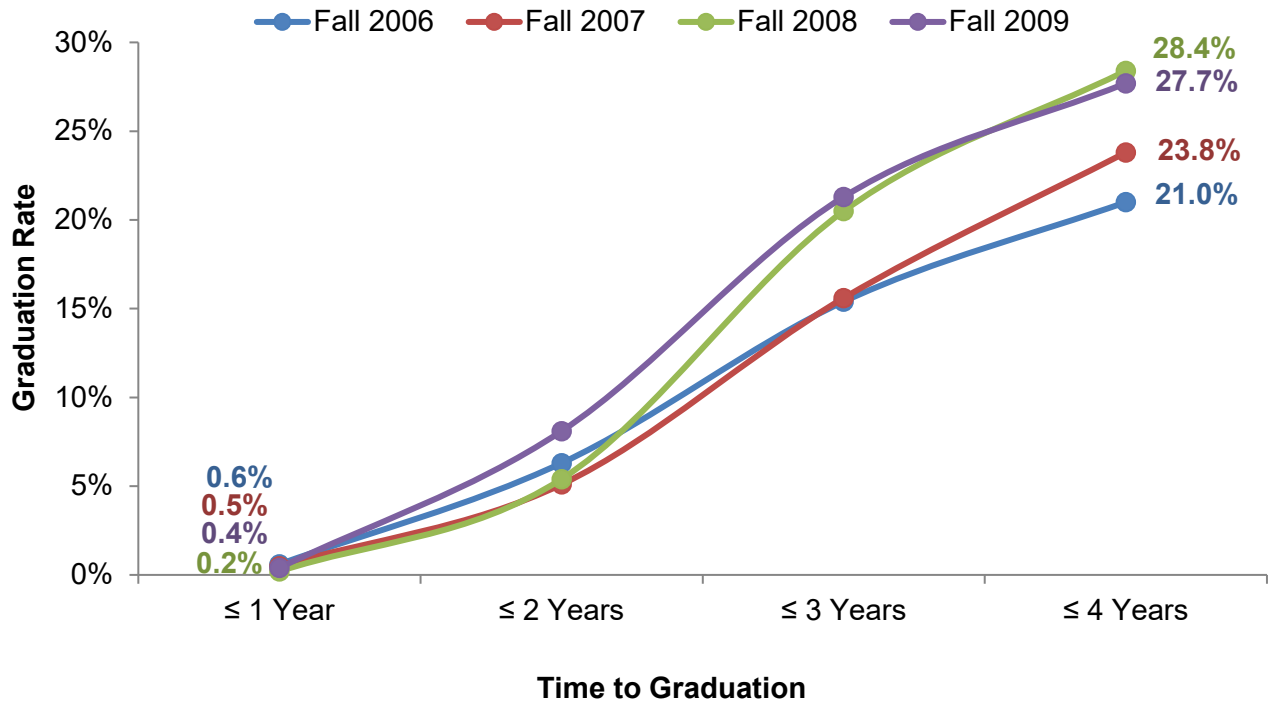
Table 1 presents graduation rates of first-time to NOVA, program-placed students from the Fall 2006 through Fall 2009 cohorts by full-/part-time status. The data show that initial enrollment gradually increased with each cohort, with the exception of the Fall 2008 cohort. Similarly, the total number of students who graduated within four years increased steadily in each cohort, with the exception of the Fall 2008 cohort, where the number of four-year graduates dropped slightly. Full-time students had higher graduation rates than part-time students in all cohorts.

**Table 1. Graduation Rates by Time to Graduation and Full-/Part-Time Status: Fall 2006 through Fall 2009 Cohorts**

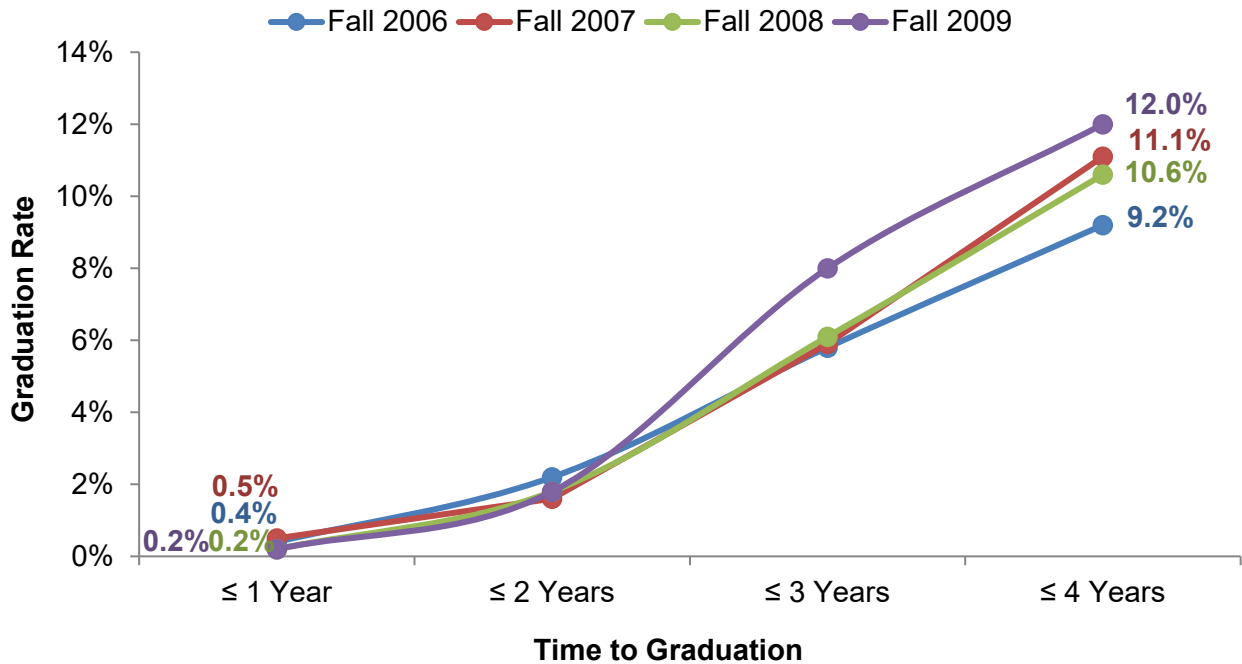
First-time to NOVA	Entering Cohort	Initial Enroll. #	≤ 1 Year		≤ 2 Years		≤ 3 Years		≤ 4 Years	
			#	%	#	%	#	%	#	%
Full-Time	Fall 2006	4,502	27	0.6	282	6.3	694	15.4	947	21.0
	Fall 2007	5,187	25	0.5	263	5.1	811	15.6	1,235	23.8
	Fall 2008	4,503	9	0.2	241	5.4	923	20.5	1,277	28.4
	Fall 2009	5,417	20	0.4	439	8.1	1,155	21.3	1,503	27.7
Part-Time	Fall 2006	3,972	14	0.4	88	2.2	232	5.8	366	9.2
	Fall 2007	4,169	20	0.5	67	1.6	246	5.9	464	11.1
	Fall 2008	3,776	8	0.2	67	1.8	231	6.1	402	10.6
	Fall 2009	3,983	7	0.2	70	1.8	319	8.0	479	12.0

Figure 2 and Figure 3 (both on next page) show the graduation rates for full- and part-time program-placed students by time to graduation for the Fall 2006 through Fall 2009 cohorts. As seen in these two figures, graduation rates varied considerably by enrollment status. For all cohorts of full-time students, 21 to 28 percent graduated within four years, but only 0.2 to 0.6 percent graduated within one year. Among all cohorts of part-time students, 9 to 12 percent graduated within four years, while only 0.2 to 0.5 percent of students in each cohort obtained degrees within one year.

**Figure 1. Graduation Rates of Full-Time Students by Time to Graduation: Fall 2006 through Fall 2009 Cohorts**



**Figure 2. Graduation Rates of Part-Time Students by Time to Graduation: Fall 2006 through Fall 2009 Cohorts**





**Section 2. Graduation Rates of First-Time to NOVA, Program-Placed Students by Full-/Part-Time Status and Gender: Fall 2006 through Fall 2009 Cohorts**

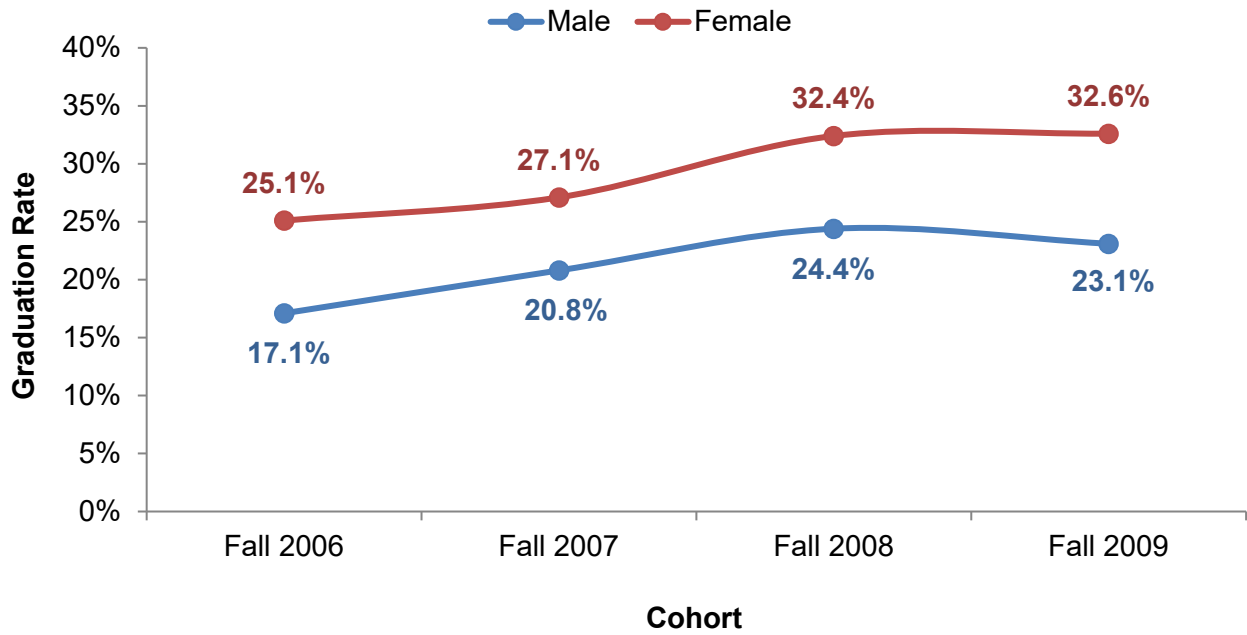
Table 2 displays graduation rates by full-/part-time status and gender. In each cohort, female students graduated at a higher rate than male students for both full-time and part-time students.

**Table 2. Graduation Rates by Time to Graduation, Full-/Part-Time Status, and Gender: Fall 2006 through Fall 2009 Cohorts**

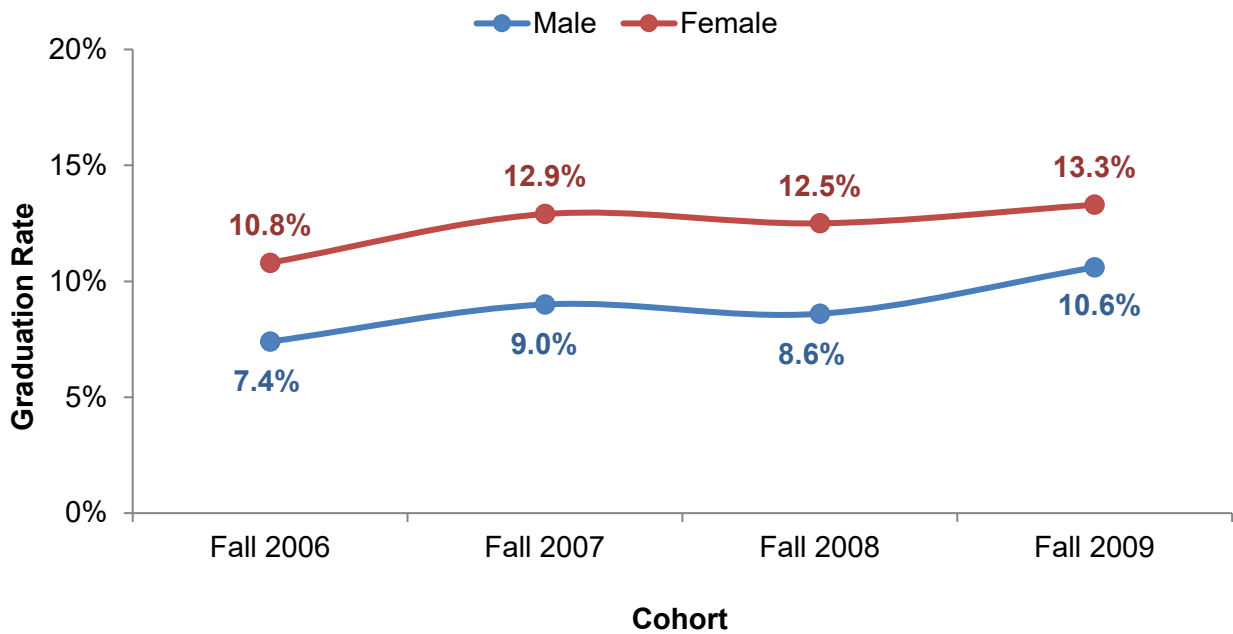
Status	Gender	Entering Cohort	Initial Enroll.	≤ 1 Year		≤ 2 Years		≤ 3 Years		≤ 4 Years	
			#	#	%	#	%	#	%	#	%
Full-Time	Male	Fall 2006	2,305	9	0.4	102	4.4	278	12.1	395	17.1
		Fall 2007	2,698	10	0.4	112	4.2	364	13.5	560	20.8
		Fall 2008	2,262	7	0.3	92	4.1	391	17.3	551	24.4
		Fall 2009	2,786	10	0.4	157	5.6	470	16.8	644	23.1
	Female	Fall 2006	2,197	18	0.8	180	8.2	416	18.9	552	25.1
		Fall 2007	2,489	15	0.6	151	6.1	447	18.0	675	27.1
		Fall 2008	2,241	2	0.0	149	6.6	532	23.7	726	32.4
		Fall 2009	2,631	10	0.4	282	10.7	685	26.0	859	32.6
Part-Time	Male	Fall 2006	1,817	6	0.3	32	1.8	86	4.7	134	7.4
		Fall 2007	1,878	8	0.4	27	1.4	87	4.6	169	9.0
		Fall 2008	1,777	4	0.2	30	1.7	88	5.0	152	8.6
		Fall 2009	1,881	3	0.2	33	1.8	131	7.0	200	10.6
	Female	Fall 2006	2,155	8	0.4	56	2.6	146	6.8	232	10.8
		Fall 2007	2,291	12	0.5	40	1.7	159	6.9	295	12.9
		Fall 2008	1,999	4	0.2	37	1.9	143	7.2	250	12.5
		Fall 2009	2,102	4	0.2	37	1.8	188	8.9	279	13.3

Figure 4 and Figure 5 (both on next page) show the graduation rates of full-time and part-time students by gender. Among full-time students, female students reached the highest four-year graduation rates at 33 percent in the Fall 2009 cohort – 10 percentage points higher than male students in the same cohort. Among part-time students, the percentage of students graduating within four years was consistently 2 to 4 percentage points higher for female students than male students in each cohort.

**Figure 3. Four-Year Graduation Rates of Full-Time Students by Gender: Fall 2006 through Fall 2009 Cohorts**



**Figure 4. Four-Year Graduation Rates of Part-Time Students by Gender: Fall 2006 through Fall 2009 Cohorts**



**Section 3. Graduation Rates of First-Time to NOVA, Program-Placed Students by Full-  
/Part-Time Status and Age: Fall 2006 through Fall 2009 Cohorts**

Table 3 (below) and Table 4 (next page) present the graduation rates of full-time and part-time students by age. As the tables show, the majority of both full-time and part-time students started courses at NOVA between the ages of 18 and 21. Among full-time students, those under 18 and those 45 and over had the lowest one-year graduation rates in all but one cohort. However, the three- and four-year graduation rates of students under 18 were the highest of all age groups in the Fall 2006 and Fall 2008 cohort. Among part-time students, those ages 25 to 29 had the highest two-year graduation rates in three of the four cohorts, and the highest three-year graduation in two of the four cohorts. The highest four-year graduation among part-time students was 23 percent, for students under 18 in the Fall 2007 cohort. Generally, graduation rates of full-time students were higher compared to part-time students of any age group.

**Table 3. Graduation Rates of Full-Time Students by Time to Graduation and Age: Fall 2006 through Fall 2009 Cohorts**

Age	Entering Cohort	Initial Enroll.	≤ 1 Year		≤ 2 Years		≤ 3 Years		≤ 4 Years	
			#	%	#	%	#	%	#	%
Under 18	Fall 2006	80	0	0.0	8	10.0	21	26.3	24	30.0
	Fall 2007	83	0	0.0	5	6.0	15	18.1	21	25.3
	Fall 2008	76	0	0.0	8	10.5	22	28.9	26	34.2
	Fall 2009	80	1	1.3	9	11.3	17	21.3	22	27.5
18-21	Fall 2006	3,701	12	0.3	196	5.3	541	14.6	768	20.8
	Fall 2007	4,261	15	0.4	187	4.4	657	15.4	1,020	23.9
	Fall 2008	3,756	5	0.1	181	4.8	792	21.1	1,093	29.1
	Fall 2009	4,337	11	0.3	354	8.2	966	22.3	1,259	29.0
22-24	Fall 2006	282	4	1.4	31	11.0	50	17.7	59	20.9
	Fall 2007	338	2	0.6	28	8.3	66	19.5	90	26.6
	Fall 2008	279	0	0.0	21	7.5	45	16.1	62	22.2
	Fall 2009	387	1	0.3	21	5.4	62	16.0	88	22.7
25-29	Fall 2006	217	7	3.2	27	12.4	43	19.8	46	21.2
	Fall 2007	271	3	1.1	26	9.6	42	15.5	60	22.1
	Fall 2008	184	2	1.1	15	8.2	36	19.6	49	26.6
	Fall 2009	305	5	1.6	31	10.2	64	21.0	78	25.6
30-44	Fall 2006	193	4	2.1	18	9.3	34	17.6	44	22.8
	Fall 2007	202	5	2.5	16	7.9	28	13.9	41	20.3
	Fall 2008	173	2	1.2	14	8.1	23	13.3	41	23.7
	Fall 2009	254	1	0.4	16	6.3	36	14.2	45	17.7
45 & Over	Fall 2006	29	0	0.0	2	6.9	5	17.2	6	20.7
	Fall 2007	32	0	0.0	1	3.1	3	9.4	3	9.4
	Fall 2008	35	0	0.0	2	5.7	5	14.3	6	17.1
	Fall 2009	54	1	1.9	8	14.8	10	18.5	11	20.4

**Table 4. Graduation Rates of Part-Time Students by Time to Graduation and Age: Fall 2006 through Fall 2009 Cohorts**

Age	Entering Cohort	Initial Enroll.	≤ 1 Year		≤ 2 Years		≤ 3 Years		≤ 4 Years	
			#	%	#	%	#	%	#	%
Under 18	Fall 2006	58	0	0.0	0	0.0	2	3.4	4	6.9
	Fall 2007	52	0	0.0	0	0.0	5	9.6	12	23.1
	Fall 2008	44	0	0.0	1	2.3	3	6.8	5	11.4
	Fall 2009	41	0	0.0	0	0.0	4	9.8	6	14.6
18-21	Fall 2006	1,829	3	0.2	23	1.3	90	4.9	154	8.4
	Fall 2007	1,875	8	0.4	22	1.2	100	5.3	211	11.3
	Fall 2008	1,925	2	0.1	23	1.2	124	6.4	235	12.2
	Fall 2009	1,927	3	0.2	25	1.3	159	8.3	234	12.1
22-24	Fall 2006	495	3	0.6	16	3.2	35	7.1	54	10.9
	Fall 2007	530	2	0.4	10	1.9	35	6.6	60	11.3
	Fall 2008	457	2	0.4	9	2.0	25	5.5	38	8.3
	Fall 2009	429	0	0.0	11	2.6	36	8.4	53	12.4
25-29	Fall 2006	565	3	0.5	17	3.0	41	7.3	62	11.0
	Fall 2007	648	4	0.6	18	2.8	41	6.3	70	10.8
	Fall 2008	453	1	0.2	17	3.8	31	6.8	46	10.2
	Fall 2009	597	0	0.0	17	2.8	61	10.2	90	15.1
30-44	Fall 2006	785	3	0.4	23	2.9	46	5.9	74	9.4
	Fall 2007	820	5	0.6	12	1.5	56	6.8	92	11.2
	Fall 2008	666	2	0.3	12	1.8	35	5.3	58	8.7
	Fall 2009	720	3	0.4	13	1.8	47	6.5	73	10.1
45 & Over	Fall 2006	240	2	0.8	9	3.8	18	7.5	18	7.5
	Fall 2007	244	1	0.4	5	2.0	9	3.7	19	7.8
	Fall 2008	231	1	0.4	5	2.2	13	5.6	20	8.7
	Fall 2009	269	1	0.4	4	1.5	12	4.5	23	8.6

Figure 5 (next page) displays the four-year graduation rates of full-time students by age. Overall, the highest graduation rate was in the Fall 2008 cohort of students under 18, at 34 percent. The overall lowest graduation rate for full-time students was in the Fall 2007 cohort of students ages 45 and older, at nine percent.

**Figure 5. Four-Year Graduation Rates of Full-Time Students by Age: Fall 2006 through Fall 2009 Cohorts**

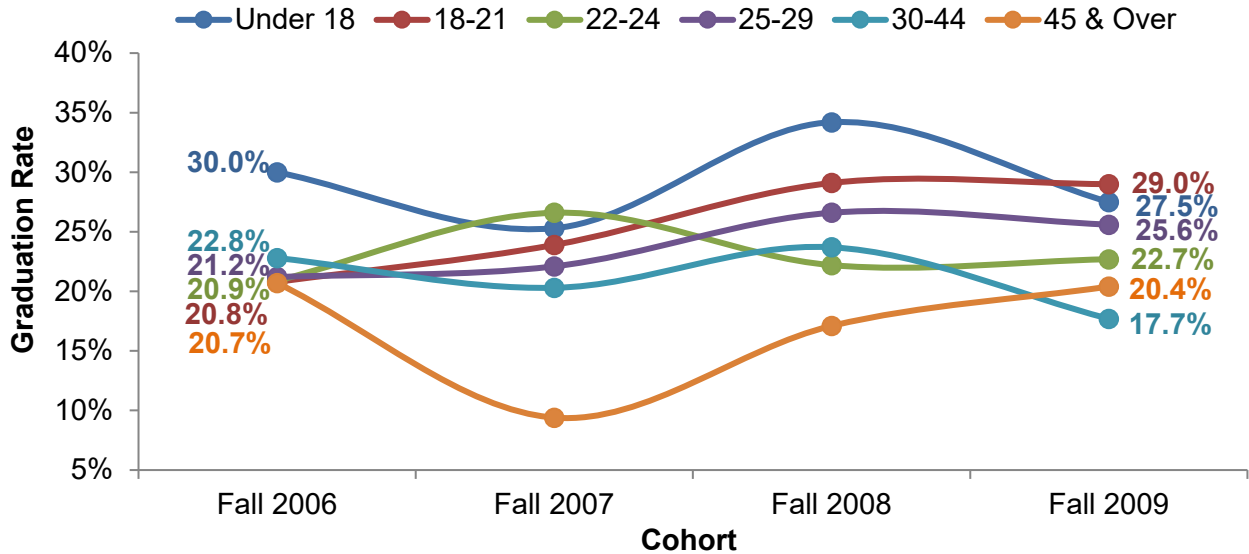
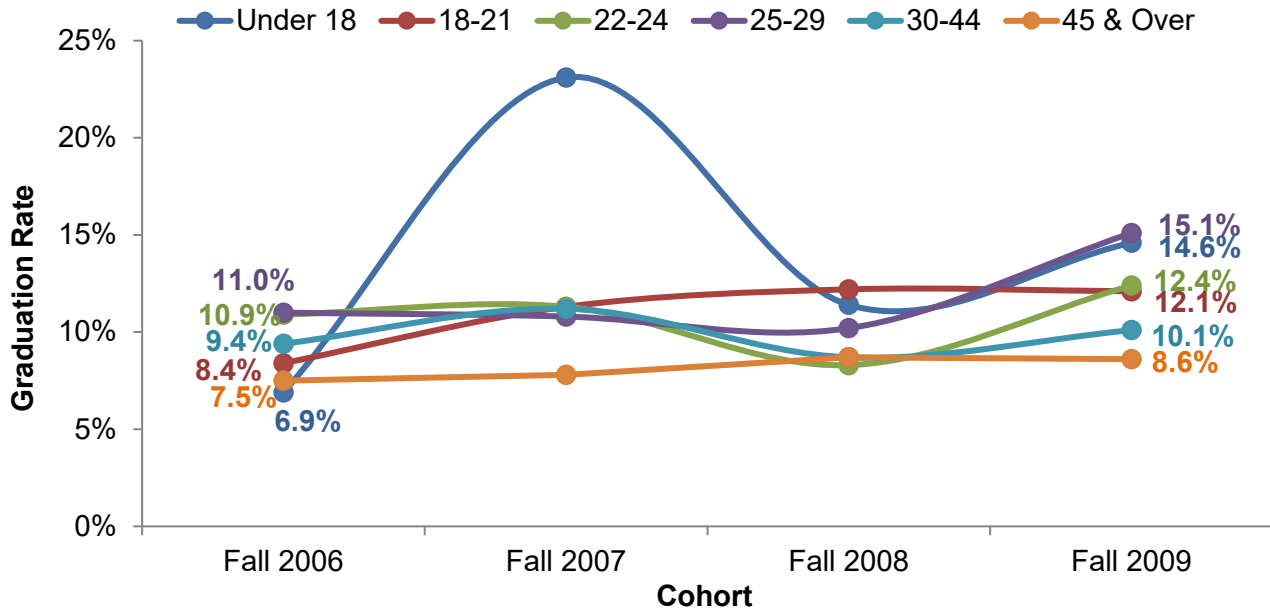


Figure 6 presents the four-year graduation rates for part-time students by age. Graduation rates varied only slightly within age groups, with the notable exception of a 16 percentage point increase in the graduation rates of students under 18 in the Fall 2007 cohort.

**Figure 6. Four-Year Graduation Rates of Part-Time Students by Age: Fall 2006 through Fall 2009 Cohorts**



**Section 4. Graduation Rates of First-Time to NOVA, Program-Placed Students by Full-/Part-Time Status and Race/Ethnicity: Fall 2006 through Fall 2009 Cohorts**

Table 5 (below) and Table 6 (next page) show the graduation rates of full-time and part-time students by race/ethnicity. Among both full-time and part-time students, Asian and White students tended to have higher graduation rates than other racial/ethnic groups, while Black students had the lowest graduation rates. Overall, most racial/ethnic groups showed little change in graduation rates from cohort to cohort.

**Table 5. Graduation Rates of Full-Time Students by Time to Graduation and Race/Ethnicity: Fall 2006 through Fall 2009 Cohorts**

Race/ Ethnicity	Entering Cohort	Initial Enroll.	≤ 1 Year		≤ 2 Years		≤ 3 Years		≤ 4 Years	
			#	%	#	%	#	%	#	%
White	Fall 2006	2,080	18	0.9	149	7.2	331	15.9	429	20.6
	Fall 2007	2,271	16	0.7	160	7.0	383	16.9	556	24.5
	Fall 2008	1,948	6	0.3	137	7.0	424	21.8	559	28.7
	Fall 2009	2,262	14	0.6	215	9.5	508	22.5	636	28.1
Black	Fall 2006	617	3	0.5	24	3.9	62	10.0	94	15.2
	Fall 2007	745	2	0.3	19	2.6	78	10.5	129	17.3
	Fall 2008	657	0	0.0	14	2.1	88	13.4	129	19.6
	Fall 2009	907	2	0.2	40	4.4	118	13.0	163	18.0
Asian	Fall 2006	829	4	0.5	53	6.4	150	18.1	223	26.9
	Fall 2007	910	3	0.3	40	4.4	171	18.8	262	28.8
	Fall 2008	827	2	0.2	43	5.2	199	24.1	282	34.1
	Fall 2009	966	3	0.3	82	8.5	256	26.5	325	33.6
Hispanic	Fall 2006	668	2	0.3	33	4.9	94	14.1	133	19.9
	Fall 2007	817	2	0.2	29	3.5	113	13.8	183	22.4
	Fall 2008	677	0	0.0	28	4.1	119	17.6	182	26.9
	Fall 2009	882	1	0.1	75	8.5	188	21.3	265	30.0
Native American*	Fall 2006	19	0	0.0	4	21.1	5	26.3	5	26.3
	Fall 2007	17	0	0.0	0	0.0	0	0.0	1	5.9
	Fall 2008	27	0	0.0	1	3.7	5	18.5	5	18.5
	Fall 2009	25	0	0.0	0	0.0	3	12.0	5	20.0
Other	Fall 2006	289	0	0.0	19	6.6	52	18.0	63	21.8
	Fall 2007	427	2	0.5	15	3.5	66	15.5	104	24.4
	Fall 2008	367	1	0.3	18	4.9	88	24.0	120	32.7
	Fall 2009	375	0	0.0	27	7.2	82	21.9	109	29.1

\*Sample size is too small to make accurate comparisons.

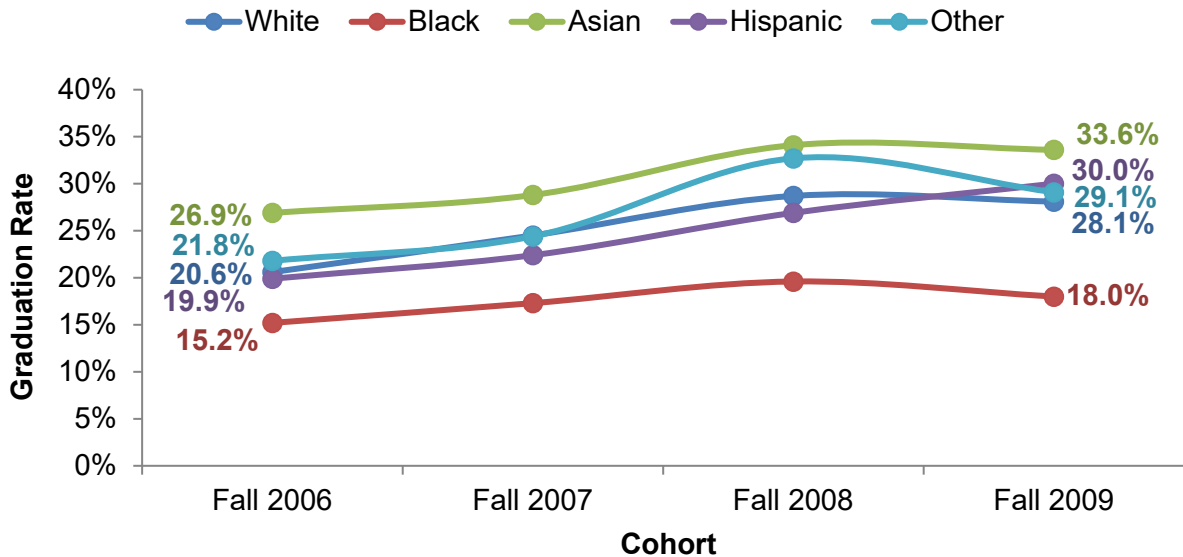
**Table 6. Graduation Rates of Part-Time Students by Time to Graduation and Race/Ethnicity: Fall 2006 through Fall 2009 Cohorts**

Race/ Ethnicity	Entering Cohort	Initial Enroll.	≤ 1 Year		≤ 2 Years		≤ 3 Years		≤ 4 Years	
			#	%	#	%	#	%	#	%
White	Fall 2006	1,830	9	0.5	41	2.2	118	6.4	182	9.9
	Fall 2007	1,858	10	0.5	35	1.9	133	7.2	240	12.9
	Fall 2008	1,606	5	0.3	39	2.4	115	7.2	178	11.1
	Fall 2009	1,758	6	0.3	44	2.5	168	9.6	232	13.2
Black	Fall 2006	803	2	0.2	13	1.6	30	3.7	55	6.8
	Fall 2007	872	3	0.3	10	1.1	29	3.3	61	7.0
	Fall 2008	757	1	0.1	10	1.3	28	3.7	61	8.1
	Fall 2009	855	0	0.0	8	0.9	37	4.3	69	8.1
Asian	Fall 2006	489	1	0.2	13	2.7	40	8.2	67	13.7
	Fall 2007	512	3	0.6	10	2.0	34	6.6	72	14.1
	Fall 2008	478	0	0.0	7	1.5	32	6.7	64	13.4
	Fall 2009	450	1	0.2	6	1.3	43	9.6	68	15.1
Hispanic	Fall 2006	587	2	0.3	14	2.4	29	4.9	43	7.3
	Fall 2007	615	3	0.5	6	1.0	27	4.4	54	8.8
	Fall 2008	660	1	0.2	4	0.6	40	6.1	71	10.8
	Fall 2009	652	0	0.0	6	0.9	43	6.6	70	10.7
Native American*	Fall 2006	19	0	0.0	1	5.3	1	5.3	1	5.3
	Fall 2007	26	0	0.0	0	0.0	1	3.8	2	7.7
	Fall 2008	19	0	0.0	0	0.0	0	0.0	1	5.3
	Fall 2009	16	0	0.0	0	0.0	0	0.0	0	0.0
Other	Fall 2006	244	0	0.0	6	2.5	14	5.7	18	7.4
	Fall 2007	286	1	0.3	6	2.1	22	7.7	35	12.2
	Fall 2008	256	1	0.4	7	2.7	16	6.3	27	10.5
	Fall 2009	252	0	0.0	6	2.4	28	11.1	40	15.9

\*Sample size is too small to make accurate comparisons.

Figure 7 (next page) shows the graduation rates for full-time, program-placed students who graduated within four years by race/ethnicity. Among the four largest racial/ethnic groups, Asian students showed the highest graduation rates, peaking at 34 percent in the Fall 2008 and Fall 2009 cohorts, while Black students had the lowest graduation rates within each cohort, between 15 and 18 percent. Hispanic students' graduation rates increased in each cohort, from 20 percent in the Fall 2006 cohort to 30 percent in the Fall 2009 cohort.

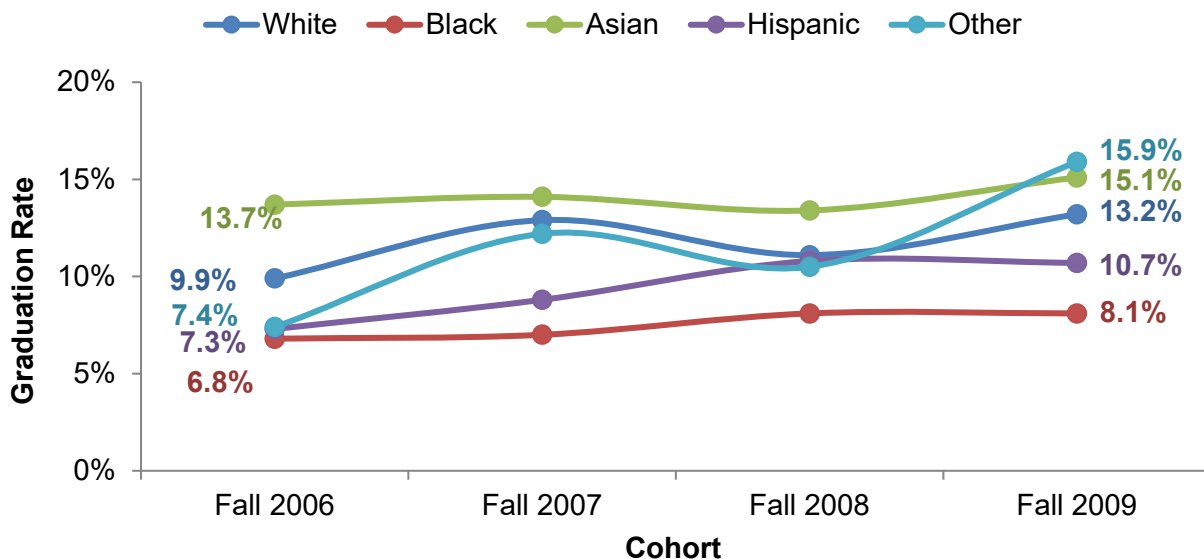
**Figure 7. Four-Year Graduation Rates of Full-Time Students by Race/Ethnicity: Fall 2006 through Fall 2009 Cohorts**



Note: Sub-groups with small sample sizes are not displayed because they are too small to make accurate comparisons.

Figure 8 presents four-year graduation rates for part-time, program-placed students by race/ethnicity. As with full-time students, Asian and White students showed the highest graduation rates (15 and 13 percent, respectively) in the Fall 2009 cohort compared with other racial/ethnic groups. For all cohorts of part-time students, Black students showed the lowest graduation rates. The Fall 2009 cohort of Other students reached the highest graduation rate for part-time students, at 16 percent.

**Figure 8. Four-Year Graduation Rates of Part-Time Students by Race/Ethnicity: Fall 2006 through Fall 2009 Cohorts**



Note: Sub-groups with small sample sizes are not displayed because they are too small to make accurate comparisons.



**Section 5. Graduation Rates of First-Time to NOVA, Program-Placed Students by Full-  
/Part-Time Status and Program Placement: Fall 2006 through Fall 2009 Cohorts**

Table 7 (below) and Table 8 (next page) display the graduation rates of full-time and part-time students by program placement. Students in A.A.A. degree programs had the lowest graduation rates among both full-time and part-time students. In each cohort, graduation rates were highest among students in A.A. and A.S. degree programs.

**Table 7. Graduation Rates of Full-Time Students by Time to Graduation and Program Placement: Fall 2006 through Fall 2009 Cohorts**

Program Placement	Entering Cohort	Initial Enroll.	≤ 1 Year		≤ 2 Years		≤ 3 Years		≤ 4 Years	
			#	%	#	%	#	%	#	%
A.A.	Fall 2006	750	8	1.1	56	7.5	128	17.1	161	21.5
	Fall 2007	750	4	0.5	47	6.3	123	16.4	182	24.3
	Fall 2008	784	0	0.0	43	5.5	167	21.3	235	30.0
	Fall 2009	891	5	0.6	100	11.2	212	23.8	269	30.2
A.S.	Fall 2006	2,103	14	0.7	141	6.7	361	17.2	492	23.4
	Fall 2007	2,518	14	0.6	145	5.8	460	18.3	684	27.2
	Fall 2008	2,318	8	0.3	126	5.4	508	21.9	694	29.9
	Fall 2009	2,993	8	0.3	242	8.1	691	23.1	880	29.4
A.A.A.	Fall 2006	79	1	1.3	3	3.8	7	8.9	9	11.4
	Fall 2007	89	0	0.0	1	1.1	4	4.5	10	11.2
	Fall 2008	73	0	0.0	1	1.4	8	11.0	14	19.2
	Fall 2009	82	0	0.0	8	9.8	17	20.7	22	26.8
A.A.S.	Fall 2006	1,349	3	0.2	72	5.3	170	12.6	246	18.2
	Fall 2007	1,555	6	0.4	63	4.1	190	12.2	311	20.0
	Fall 2008	1,135	1	0.1	63	5.6	208	18.3	293	25.8
	Fall 2009	1,210	5	0.4	75	6.2	202	16.7	282	23.3
Certificate	Fall 2006	221	1	0.5	10	4.5	28	12.7	39	17.6
	Fall 2007	275	1	0.4	7	2.5	34	12.4	48	17.5
	Fall 2008	193	0	0.0	8	4.1	32	16.6	41	21.2
	Fall 2009	241	2	0.8	14	5.8	33	13.7	50	20.7

**Table 8. Graduation Rates of Part-Time Students by Time to Graduation and Program Placement: Fall 2006 through Fall 2009 Cohorts**

Program Placement	Entering Cohort	Initial Enroll.	≤ 1 Year		≤ 2 Years		≤ 3 Years		≤ 4 Years	
			#	%	#	%	#	%	#	%
A.A.	Fall 2006	528	0	0.0	13	2.5	33	6.3	51	9.7
	Fall 2007	490	4	0.8	10	2.0	26	5.3	54	11.0
	Fall 2008	444	1	0.2	10	2.3	34	7.7	55	12.4
	Fall 2009	473	0	0.0	10	2.1	51	10.8	68	14.4
A.S.	Fall 2006	1,660	9	0.5	41	2.5	121	7.3	189	11.4
	Fall 2007	1,930	12	0.6	39	2.0	146	7.6	277	14.4
	Fall 2008	1,813	3	0.2	34	1.9	128	7.1	216	11.9
	Fall 2009	1,996	3	0.2	37	1.9	184	9.2	272	13.6
A.A.A.	Fall 2006	42	0	0.0	1	2.4	3	7.1	4	9.5
	Fall 2007	56	0	0.0	0	0.0	0	0.0	3	5.4
	Fall 2008	49	0	0.0	0	0.0	0	0.0	2	4.1
	Fall 2009	47	0	0.0	1	2.1	2	4.3	3	6.4
A.A.S.	Fall 2006	1,364	1	0.1	19	1.4	51	3.7	91	6.7
	Fall 2007	1,323	3	0.2	11	0.8	55	4.2	104	7.9
	Fall 2008	1,158	1	0.1	14	1.2	49	4.2	100	8.6
	Fall 2009	1,111	0	0.0	12	1.1	62	5.6	107	9.6
Certificate	Fall 2006	378	4	1.1	14	3.7	24	6.3	31	8.2
	Fall 2007	370	1	0.3	7	1.9	19	5.1	26	7.0
	Fall 2008	312	3	1.0	9	2.9	20	6.4	29	9.3
	Fall 2009	356	4	1.1	10	2.8	20	5.6	29	8.1

Figure 9 (next page) shows the four-year graduation rates of full-time students by program placement. The graduation rates of full-time students increased gradually in each cohort. For example, 27 percent of A.A.A students from the Fall 2009 cohort attained their degree within four years compared with 11 percent from the Fall 2006 cohort.

**Figure 9. Graduation Rates of Full-Time Students by Program Placement: Fall 2006 through Fall 2009 Cohorts**

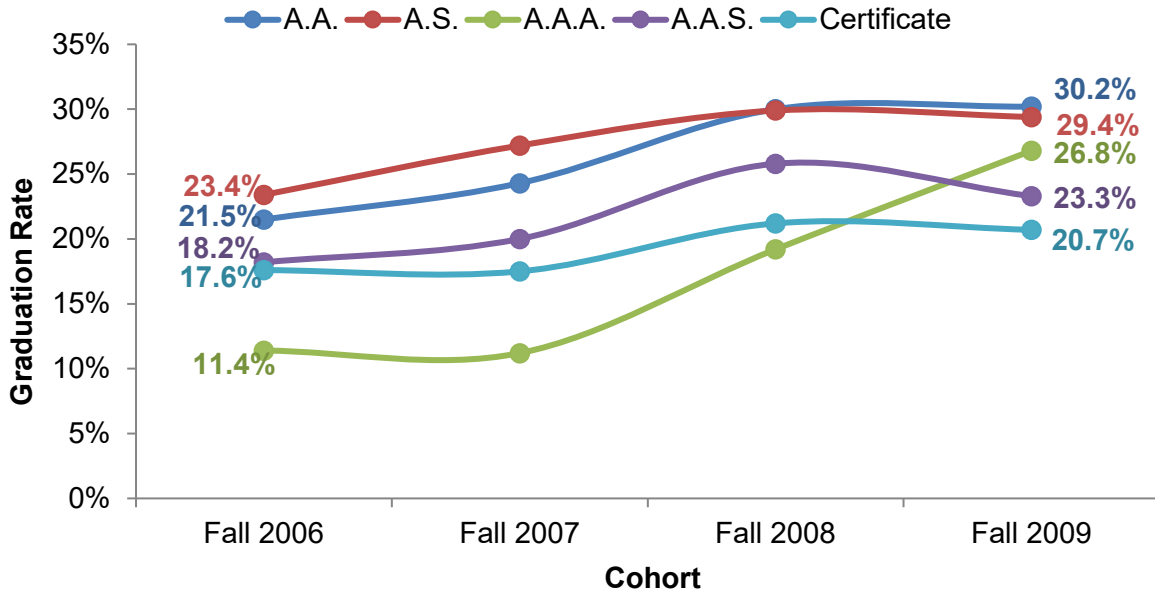
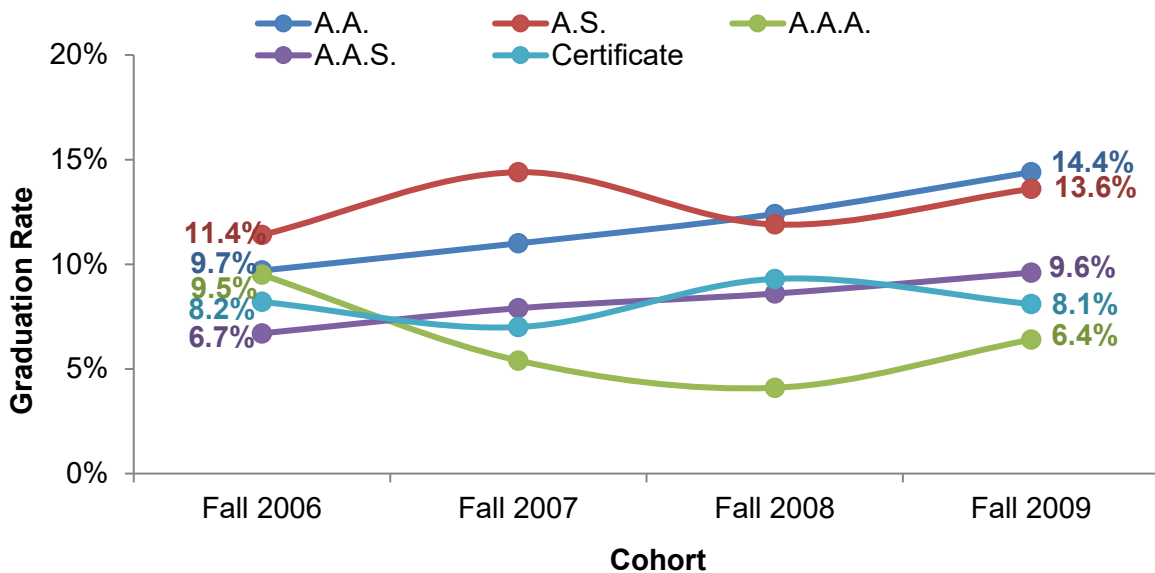


Figure 10 presents the four-year graduation rates of part-time students by program placement. Graduation rates of A.S. part-time students fluctuated across cohorts, but increased overall from the Fall 2006 cohort (11 percent) to the Fall 2009 cohort (14 percent). From the Fall 2006 through Fall 2009 cohorts, the graduation rates increased four percentage points for A.A. students and three percentage points for A.A.S. students. The graduation rates of part-time students in certificate programs remained relatively steady at eight percent in each cohort.

**Figure 10. Graduation Rates of Part-Time Students by Program Placement: Fall 2006 through Fall 2009 Cohorts**



## ***NOVA Mission and Strategic Goals: 2005 – 2015***

### **Mission**

With commitment to the values of access, opportunity, student success, and excellence, the mission of Northern Virginia Community College is to deliver world-class in-person and online post-secondary teaching, learning, and workforce development to ensure our region and the Commonwealth of Virginia have an educated population and globally competitive workforce.

### **Strategic Goals**

- I. **STUDENT SUCCESS** – Northern Virginia Community College will move into the top tier of community colleges with respect to the college readiness, developmental course completion, retention, graduation, transfer, and career placement of its students.
- II. **ACCESS** – Northern Virginia Community College will increase the number and diversity of students being served to mirror the population growth of the region.
- III. **TEACHING AND LEARNING** – Northern Virginia Community College will focus on student success by creating an environment of world-class teaching and learning.
- IV. **EXCELLENCE** – Northern Virginia Community College will develop ten focal points of excellence in its educational programs and services that will be benchmarked to the best in the nation and strategic to building the College's overall reputation for quality.
- V. **LEADERSHIP** – Northern Virginia Community College will serve as a catalyst and a leader in developing educational and economic opportunities for all Northern Virginians and in maintaining the quality of life and economic competitiveness of the region.
- VI. **PARTNERSHIPS** – Northern Virginia Community College will develop strategic partnerships to create gateways of opportunity and an integrated educational system for Northern Virginians who are pursuing the American Dream.
- VII. **RESOURCES** – Northern Virginia Community College will increase its annual funding by \$100 million and expand its physical facilities by more than one million square feet in new and renovated space. This includes the establishment of two additional campuses at epicenters of the region's population growth, as well as additional education and training facilities in or near established population centers.
- VIII. **EMERGENCY PREPAREDNESS AND CONTINUITY OF OPERATIONS** – Northern Virginia Community College will be recognized as a leader among institutions of higher education in Virginia for its development and testing of emergency response and continuity of operation plans.

# **NOVA**

---

**Northern Virginia  
Community College**

**703-323-3000 | [www.nvcc.edu](http://www.nvcc.edu)**